

For Research Use Only

CD20 Polyclonal antibody

Catalog Number: 24828-1-AP

6 Publications



Basic Information

Catalog Number:

24828-1-AP

Size:

150ul, Concentration: 300 ug/ml by Nanodrop;

Source:

Rabbit

Isotype:

IgG

Immunogen Catalog Number:

AG17309

GenBank Accession Number:

BC002807

GeneID (NCBI):

931

UNIPROT ID:

P11836

Full Name:

membrane-spanning 4-domains, subfamily A, member 1

Calculated MW:

297 aa, 33 kDa

Observed MW:

33 kDa

Purification Method:

Antigen affinity purification

Recommended Dilutions:

WB 1:5000-1:50000

IP 0.5-4.0 ug for 1.0-3.0 mg of total protein lysate

IHC 1:500-1:2000

IF-P 1:50-1:500

IF/ICC 1:200-1:800

Applications

Tested Applications:

WB, IHC, IF/ICC, IF-P, IP, ELISA

Cited Applications:

WB, IHC

Species Specificity:

human

Cited Species:

human, mouse

Note-IHC: suggested antigen retrieval with TE buffer pH 9.0; (*) Alternatively, antigen retrieval may be performed with citrate buffer pH 6.0

Positive Controls:

WB: Daudi cells, Raji cells, Ramos cells

IP: Raji cells,

IHC: human tonsillitis tissue, human appendicitis tissue, human breast cancer tissue, human colon cancer tissue

IF-P: human tonsillitis tissue, Raji cells

IF/ICC: Raji cells,

Background Information

CD20 is a 33-37 kDa transmembrane phosphoprotein. CD20 is a B-lymphocyte surface molecule that is widely expressed during B-cell ontogeny, from early pre-B-cell developmental stages until final differentiation into plasma cells. CD20 functions as calcium-permeable cation channel. It is involved in the regulation of B-cell activation and proliferation. CD20 serves as a useful target for antibody-mediated therapeutic depletion of B-cells.

Notable Publications

Author	Pubmed ID	Journal	Application
A Zietzer	27770498	Acta Physiol (Oxf)	WB
Sirui Qian	35020842	Clin Exp Immunol	IHC
Han Wang	40020328	Pathol Res Pract	WB, IHC

Storage

Storage:

Store at -20°C. Stable for one year after shipment.

Storage Buffer:

PBS with 0.02% sodium azide and 50% glycerol, pH7.3

Aliquoting is unnecessary for -20°C storage

*** 20ul sizes contain 0.1% BSA

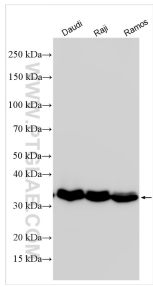
For technical support and original validation data for this product please contact:

T: 1 (888) 4PTGLAB (1-888-478-4522) (toll free in USA), or 1(312) 455-8498 (outside USA)

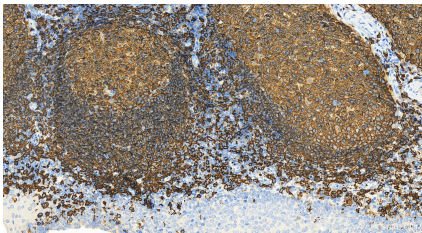
E: proteintech@ptglab.com
W: ptglab.com

This product is exclusively available under Proteintech Group brand and is not available to purchase from any other manufacturer.

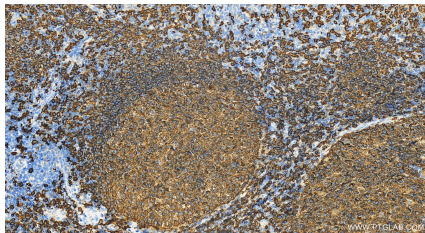
Selected Validation Data



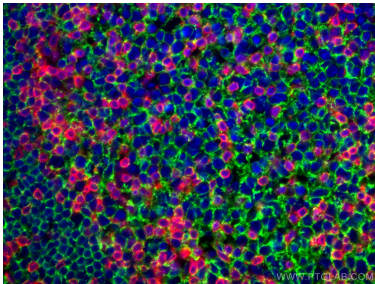
Various lysates were subjected to SDS PAGE followed by western blot with 24828-1-AP (CD20 antibody) at dilution of 1:30000 incubated at room temperature for 1.5 hours.



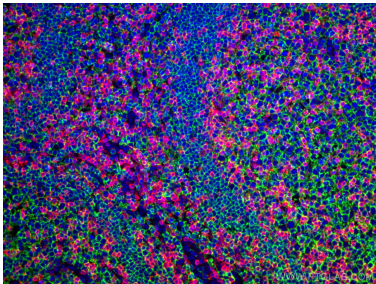
Immunohistochemical analysis of paraffin-embedded human tonsillitis tissue slide using 24828-1-AP (CD20 antibody) at dilution of 1:1000 (under 20x lens). Heat mediated antigen retrieval with Tris-EDTA buffer (pH 9.0).



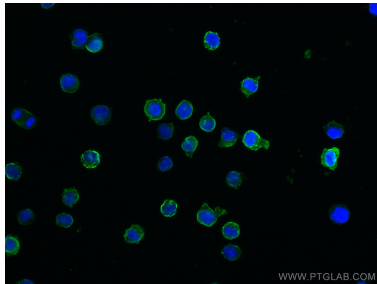
Immunohistochemical analysis of paraffin-embedded human tonsillitis tissue slide using 24828-1-AP (CD20 antibody) at dilution of 1:1000 (under 20x lens). Heat mediated antigen retrieval with Tris-EDTA buffer (pH 9.0).



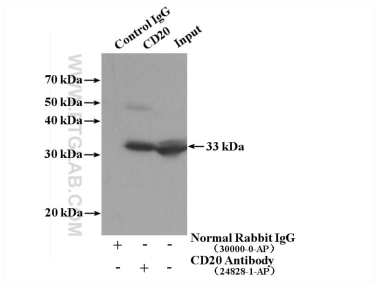
Immunofluorescent analysis of (4% PFA) fixed human tonsillitis tissue using CD20 antibody (24828-1-AP) at dilution of 1:200 and CoraLite®488-Conjugated AffiniPure Goat Anti-Rabbit IgG(H+L), CD3 antibody (60181-1-Ig, Clone: 3F3A1, red).



Immunofluorescent analysis of (4% PFA) fixed human tonsillitis tissue using CD20 antibody (24828-1-AP) at dilution of 1:200 and CoraLite®488-Conjugated AffiniPure Goat Anti-Rabbit IgG(H+L), CD3 antibody (60181-1-Ig, Clone: 3F3A1, red).



Immunofluorescent analysis of (4% PFA) fixed Raji cells using CD20 antibody (24828-1-AP) at dilution of 1:400 and CoraLite®488-Conjugated AffiniPure Goat Anti-Rabbit IgG(H+L).



IP result of anti-CD20 (IP:24828-1-AP, 4ug; Detection:24828-1-AP 1:600) with Raji cells lysate 1440ug.