

For Research Use Only

TREX1 Polyclonal antibody

Catalog Number: 24876-1-AP

Featured Product

6 Publications



Basic Information

Catalog Number:

24876-1-AP

Size:

150ul, Concentration: 750 ug/ml by Nanodrop and 347 ug/ml by Bradford method using BSA as the standard;

Source:

Rabbit

Isotype:

IgG

Immunogen Catalog Number:

AG18325

GenBank Accession Number:

BC023630

GeneID (NCBI):

11277

UNIPROT ID:

Q9NSU2

Full Name:

three prime repair exonuclease 1

Calculated MW:

369 aa, 39 kDa

Observed MW:

32-39 kDa

Purification Method:

Antigen affinity purification

Recommended Dilutions:

WB: 1:500-1:3000

IP: 0.5-4.0 ug for 1.0-3.0 mg of total protein lysate

IF/ICC: 1:50-1:500

Applications

Tested Applications:

WB, IF/ICC, IP, ELISA

Cited Applications:

WB, IF

Species Specificity:

human

Cited Species:

human, bovine

Positive Controls:

WB: HeLa cells, HepG2 cells

IP: HeLa cells,

IF/ICC: HeLa cells,

Background Information

TREX1 (three prime repair exonuclease 1), also known as trophoblast expressed 1, CRV, AGS1, AGS5, DRN3, HERNS or DNase III, is a member of the exonuclease superfamily and belongs to the TREX family. TREX1 may play a role in DNA repair. TREX1 is expressed in thymus, spleen, liver, brain, heart, small intestine and colon. Mutations or defects in the gene encoding TREX1 have been associated with a variety of diseases, including systemic lupus erythematosus, chilblain lupus (CHBL), Aicardi-Goutieres syndrome type 1 (AGS1) and type 5 (AGS5).

Notable Publications

| Author | Pubmed ID | Journal | Application |
|---------------|-----------|--------------------------|-------------|
| Rie Saito | 30561700 | J Neuropathol Exp Neurol | |
| Tamar Rubin | 40061936 | Front Immunol | WB |
| Miaomiao Yang | 38791317 | Int J Mol Sci | WB |

Storage

Storage:

Store at -20°C. Stable for one year after shipment.

Storage Buffer:

PBS with 0.02% sodium azide and 50% glycerol, pH7.3

Aliquoting is unnecessary for -20°C storage

*** 20ul sizes contain 0.1% BSA

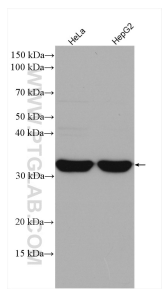
For technical support and original validation data for this product please contact:

T: 1 (888) 4PTGLAB (1-888-478-4522) (toll free in USA), or 1(312) 455-8498 (outside USA)

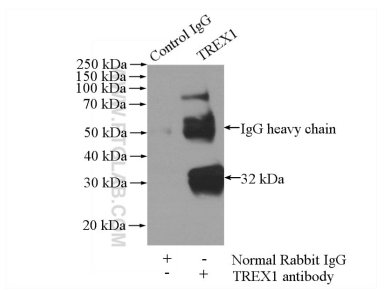
E: proteintech@ptglab.com
W: ptglab.com

This product is exclusively available under Proteintech Group brand and is not available to purchase from any other manufacturer.

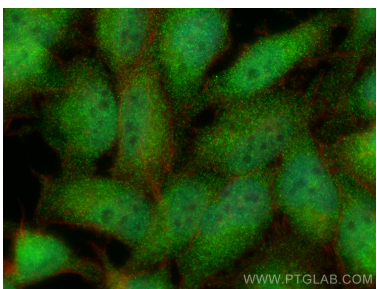
Selected Validation Data



Various lysates were subjected to SDS PAGE followed by western blot with 24876-1-AP (TREX1 antibody) at dilution of 1:1500 incubated at room temperature for 1.5 hours.



IP result of anti-TREX1 (IP:24876-1-AP, 4ug; Detection:24876-1-AP 1:300) with HeLa cells lysate 1200ug.



Immunofluorescent analysis of (4% PFA) fixed HeLa cells using TREX1 antibody (24876-1-AP) at dilution of 1:200 and CoraLite®488-Conjugated Goat Anti-Rabbit IgG(H+L) (SA00013-2), CL594-Phalloidin (red).