

For Research Use Only

PPP2R3C Polyclonal antibody

Catalog Number: 24877-1-AP



Basic Information

Catalog Number:

24877-1-AP

Size:

150ul, Concentration: 500 ug/ml by Nanodrop and 320 ug/ml by Bradford method using BSA as the standard;

Source:

Rabbit

Isotype:

IgG

Immunogen Catalog Number:

AG19282

GenBank Accession Number:

BC063438

GeneID (NCBI):

55012

UNIPROT ID:

Q969Q6

Full Name:

protein phosphatase 2 (formerly 2A), regulatory subunit B", gamma

Calculated MW:

453 aa, 53 kDa

Observed MW:

53 kDa

Purification Method:

Antigen affinity purification

Recommended Dilutions:

WB 1:500-1:1000

IHC 1:20-1:200

Applications

Tested Applications:

WB, IHC, ELISA

Species Specificity:

human, mouse, rat

Note-IHC: suggested antigen retrieval with TE buffer pH 9.0; (*) Alternatively, antigen retrieval may be performed with citrate buffer pH 6.0

Positive Controls:

WB : mouse brain tissue, rat brain tissue

IHC : human brain tissue, human stomach cancer tissue

Background Information

PPP2R3C(Serine/threonine-protein phosphatase 2A regulatory subunit B" subunit gamma) is also named as C14orf10, and G5PR. It may regulate MCM3AP phosphorylation through phosphatase recruitment and play a role in the activation-induced cell death of B-cells. It has 2 isoforms produced by alternative splicing with the molecular weight of 53 kDa and 40 kDa.

Storage

Storage:

Store at -20°C. Stable for one year after shipment.

Storage Buffer:

PBS with 0.02% sodium azide and 50% glycerol pH 7.3.

Aliquoting is unnecessary for -20°C storage

*** 20ul sizes contain 0.1% BSA

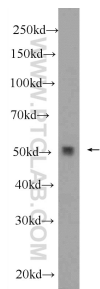
For technical support and original validation data for this product please contact:

T: 1 (888) 4PTGLAB (1-888-478-4522) (toll free in USA), or 1(312) 455-8498 (outside USA)

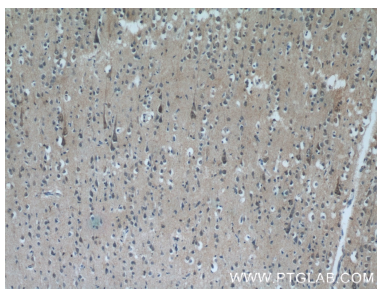
E: proteintech@ptglab.com
W: ptglab.com

This product is exclusively available under Proteintech Group brand and is not available to purchase from any other manufacturer.

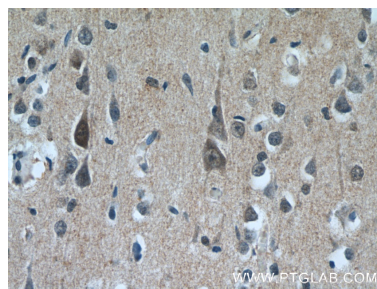
Selected Validation Data



mouse brain tissue were subjected to SDS PAGE followed by western blot with 24877-1-AP (PPP2R3C Antibody) at dilution of 1:600 incubated at room temperature for 1.5 hours.



Immunohistochemical analysis of paraffin-embedded human brain tissue slide using 24877-1-AP (PPP2R3C Antibody) at dilution of 1:50 (under 10x lens).



Immunohistochemical analysis of paraffin-embedded human brain tissue slide using 24877-1-AP (PPP2R3C Antibody) at dilution of 1:50 (under 40x lens).