

For Research Use Only

# KIAA1217 Polyclonal antibody

Catalog Number: 24880-1-AP



## Basic Information

### Catalog Number:

24880-1-AP

### Size:

150ul, Concentration: 800 ug/ml by Nanodrop and 433 ug/ml by Bradford method using BSA as the standard;

### Source:

Rabbit

### Isotype:

IgG

### Immunogen Catalog Number:

AG19367

### GenBank Accession Number:

BC018764

### GeneID (NCBI):

56243

### UNIPROT ID:

Q5T5P2

### Full Name:

KIAA1217

### Calculated MW:

1943 aa, 214 kDa

### Observed MW:

100-110 kDa, 140-160 kDa, 210 kDa

### Purification Method:

Antigen affinity purification

### Recommended Dilutions:

WB 1:500-1:1000

## Applications

### Tested Applications:

WB, ELISA

### Species Specificity:

human, mouse, rat

### Positive Controls:

WB : HEK-293 cells, rat colon tissue, mouse colon tissue

## Background Information

KIAA1217, sickle tail protein homolog, is required for normal development of intervertebral disks. It promotes epithelial-mesenchymal transition and hepatocellular carcinoma metastasis by interacting with and activating STAT3, indicating its potential as a therapeutic target for curbing HCC metastasis (PMID: 35008530). It is also a novel candidate gene associated with isolated and syndromic vertebral malformations (PMID: 32369272). KIAA1217 has 9 alternatively spliced isoforms of 100-110 kDa, 140-160 kDa, 210 kDa.

## Storage

### Storage:

Store at -20°C. Stable for one year after shipment.

### Storage Buffer:

PBS with 0.02% sodium azide and 50% glycerol pH 7.3.

Aliquoting is unnecessary for -20°C storage

\*\*\* 20ul sizes contain 0.1% BSA

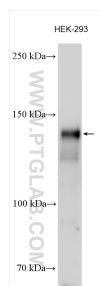
For technical support and original validation data for this product please contact:

T: 1 (888) 4PTGLAB (1-888-478-4522) (toll free in USA), or 1(312) 455-8498 (outside USA)

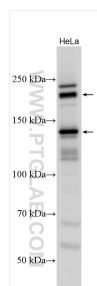
E: [proteintech@ptglab.com](mailto:proteintech@ptglab.com)  
W: [ptglab.com](http://ptglab.com)

This product is exclusively available under Proteintech Group brand and is not available to purchase from any other manufacturer.

## Selected Validation Data



Various lysates were subjected to SDS PAGE followed by western blot with 24880-1-AP (KIAA1217 antibody) at dilution of 1:500 incubated at room temperature for 1.5 hours.



HeLa cells were subjected to SDS PAGE followed by western blot with 24880-1-AP (KIAA1217 antibody) at dilution of 1:500 incubated at room temperature for 1.5 hours.