

For Research Use Only

CYP7B1 Polyclonal antibody

Catalog Number: 24889-1-AP

27 Publications



Basic Information

Catalog Number:

24889-1-AP

Size:

150ul, Concentration: 650 µg/ml by Nanodrop;

Source:

Rabbit

Isotype:

IgG

Immunogen Catalog Number:

AG19374

GenBank Accession Number:

BC136574

GeneID (NCBI):

9420

UNIPROT ID:

O75881

Full Name:

cytochrome P450, family 7, subfamily B, polypeptide 1

Calculated MW:

506 aa, 58 kDa

Observed MW:

50-55 kDa

Purification Method:

Antigen affinity purification

Recommended Dilutions:

WB 1:500-1:2000

IHC 1:50-1:500

IF/ICC 1:50-1:500

Applications

Tested Applications:

WB, IHC, IF/ICC, ELISA

Cited Applications:

WB, IHC

Species Specificity:

human, mouse

Cited Species:

human, mouse, rat

Note-IHC: suggested antigen retrieval with TE buffer pH 9.0; (*) Alternatively, antigen retrieval may be performed with citrate buffer pH 6.0

Positive Controls:

WB : A431 cells, HEK-293 cells, mouse liver tissue

IHC : human liver cancer tissue, human brain tissue, human liver tissue, mouse liver tissue

IF/ICC : HEK-293 cells, HeLa cells

Background Information

CYP7B1(Cytochrome P450 7B1) is also named as 25-hydroxycholesterol 7-alpha-hydroxylase and belongs to the cytochrome P450 family. It catalyzes the first and rate-limiting step in the coconversion of cholesterol to bile acids and CYP7B1-mediated catalysis may play a role for control of the cellular levels of androgens, not only of estrogens.

Notable Publications

| Author | Pubmed ID | Journal | Application |
|--------------|-----------|----------------------|-------------|
| Wenyun Li | 34563664 | J Nutr Biochem | WB |
| Dandan Zhong | 30196282 | Cell Physiol Biochem | WB |
| Yanan Chen | 31628911 | Biochem Pharmacol | WB |

Storage

Storage:

Store at -20°C. Stable for one year after shipment.

Storage Buffer:

PBS with 0.02% sodium azide and 50% glycerol pH 7.3.

Aliquoting is unnecessary for -20°C storage

*** 20ul sizes contain 0.1% BSA

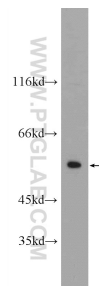
For technical support and original validation data for this product please contact:

T: 1 (888) 4PTGLAB (1-888-478-4522) (toll free in USA), or 1(312) 455-8498 (outside USA)

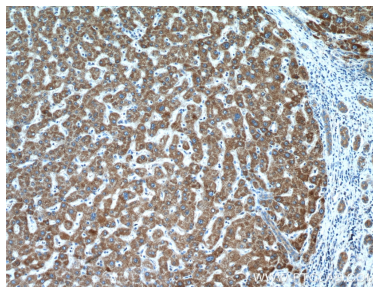
E: proteintech@ptglab.com
W: ptglab.com

This product is exclusively available under Proteintech Group brand and is not available to purchase from any other manufacturer.

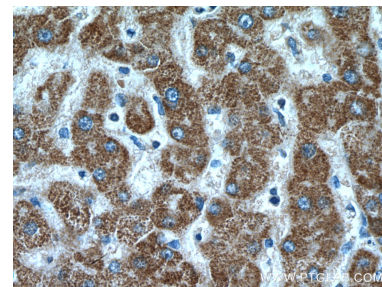
Selected Validation Data



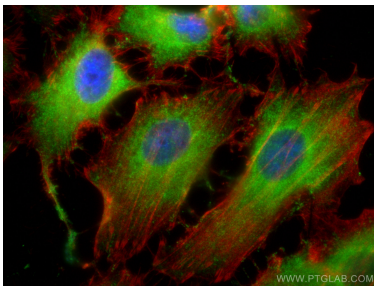
A431 cells were subjected to SDS PAGE followed by western blot with 24889-1-AP (CYP7B1 Antibody) at dilution of 1:1000 incubated at room temperature for 1.5 hours.



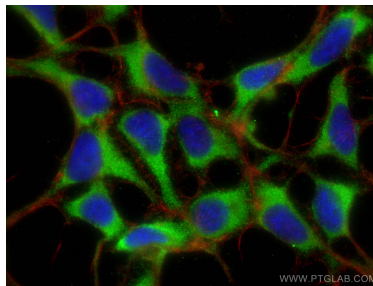
Immunohistochemical analysis of paraffin-embedded human liver cancer tissue slide using 24889-1-AP (CYP7B1 antibody) at dilution of 1:200 (under 10x lens).



Immunohistochemical analysis of paraffin-embedded human liver cancer tissue slide using 24889-1-AP (CYP7B1 antibody) at dilution of 1:200 (under 40x lens).



Immunofluorescent analysis of (-20°C Ethanol) fixed HeLa cells using CYP7B1 antibody (24889-1-AP) at dilution of 1:400 and CoraLite®488-Conjugated AffiniPure Goat Anti-Rabbit IgG(H+L) (SA00013-2), CL594-phalloidin (red).



Immunofluorescent analysis of (-20°C Ethanol) fixed HEK-293 cells using CYP7B1 antibody (24889-1-AP) at dilution of 1:200 and CoraLite®488-Conjugated AffiniPure Goat Anti-Rabbit IgG(H+L), CL594-Phalloidin (red).