

For Research Use Only

GRAMD1B Polyclonal antibody

Catalog Number: 24905-1-AP

Featured Product

5 Publications



Basic Information

Catalog Number:

24905-1-AP

Size:

150ul, Concentration: 850 ug/ml by Nanodrop;

Source:

Rabbit

Isotype:

IgG

Immunogen Catalog Number:

AG20670

GenBank Accession Number:

BC107480

GeneID (NCBI):

57476

UNIPROT ID:

Q3KR37

Full Name:

GRAM domain containing 1B

Calculated MW:

738 aa, 85 kDa

Observed MW:

85 kDa

Purification Method:

Antigen affinity purification

Recommended Dilutions:

WB 1:500-1:2000

IHC 1:50-1:500

IF/ICC 1:20-1:200

Applications

Tested Applications:

WB, IHC, IF/ICC, FC (Intra), ELISA

Cited Applications:

WB, IF

Species Specificity:

human, mouse

Cited Species:

human, mouse

Note-IHC: suggested antigen retrieval with TE buffer pH 9.0; (*) Alternatively, antigen retrieval may be performed with citrate buffer pH 6.0

Positive Controls:

WB : A549 cells,

IHC : human liver cancer tissue,

IF/ICC : A549 cells,

Background Information

GRAMD1B, also named as KIAA1201, contains a transmembrane region and two domains of known function; the GRAM domain and a VAS domain. It is predicted to localize in the nucleus, supported by several nuclear transport signals and nuclear associated motifs. This highly conserved gene is found in a variety of vertebrates and invertebrates, however, it is not found in bacteria or fungi. There're some isoforms with MW 50 kDa and 81-87 kDa. With phosphor modification, it's about 90-110 kDa in WB detection.

Notable Publications

Author	Pubmed ID	Journal	Application
John-Paul Andersen	32738348	Mol Metab	WB
Binxing Li	39151780	Exp Eye Res	WB,IF
Hyung Bum Kim	38826375	bioRxiv	WB,IF

Storage

Storage:

Store at -20°C. Stable for one year after shipment.

Storage Buffer:

PBS with 0.02% sodium azide and 50% glycerol pH 7.3.

Aliquoting is unnecessary for -20°C storage

*** 20ul sizes contain 0.1% BSA

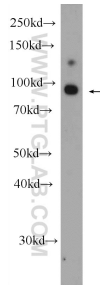
For technical support and original validation data for this product please contact:

T: 1 (888) 4PTGLAB (1-888-478-4522) (toll free in USA), or 1(312) 455-8498 (outside USA)

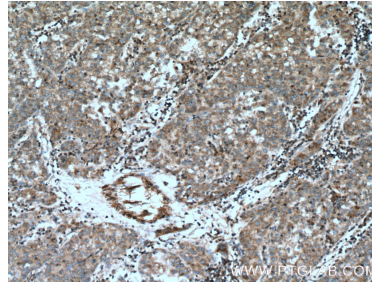
E: proteintech@ptglab.com
W: ptglab.com

This product is exclusively available under Proteintech Group brand and is not available to purchase from any other manufacturer.

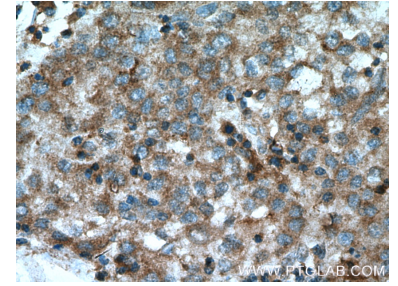
Selected Validation Data



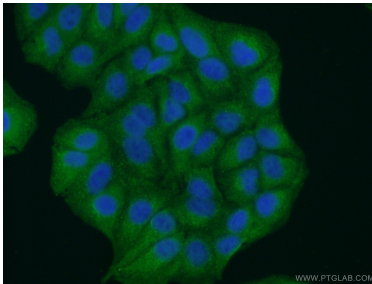
A549 cells were subjected to SDS PAGE followed by western blot with 24905-1-AP (GRAMD1B Antibody) at dilution of 1:1000 incubated at room temperature for 1.5 hours.



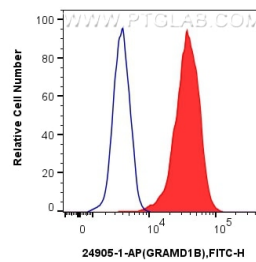
Immunohistochemical analysis of paraffin-embedded human liver cancer tissue slide using 24905-1-AP (GRAMD1B Antibody) at dilution of 1:200 (under 10x lens). Heat mediated antigen retrieval with Tris-EDTA buffer (pH 9.0).



Immunohistochemical analysis of paraffin-embedded human liver cancer tissue slide using 24905-1-AP (GRAMD1B Antibody) at dilution of 1:200 (under 40x lens). Heat mediated antigen retrieval with Tris-EDTA buffer (pH 9.0).



Immunofluorescent analysis of (10% Formaldehyde) fixed A549 cells using 24905-1-AP (GRAMD1B antibody) at dilution of 1:50 and Alexa Fluor 488-conjugated Goat Anti-Rabbit IgG(H+L).



1X10⁶ A549 cells were intracellularly stained with 0.4 ug Anti-Human GRAMD1B (24905-1-AP) and CoraLite®488-Conjugated Goat Anti-Rabbit IgG(H+L) at dilution 1:1000 (red), or 0.4 ug Rabbit IgG control Rabbit PolyAb (30000-0-AP, Clone:) (blue). Cells were fixed with 4% PFA and permeabilized with Flow Cytometry Perm Buffer (PF00011-C).