

For Research Use Only

C2orf47 Polyclonal antibody

Catalog Number: 24930-1-AP

1 Publications



Basic Information

Catalog Number:

24930-1-AP

Size:

150ul, Concentration: 750 ug/ml by Nanodrop and 420 ug/ml by Bradford method using BSA as the standard;

Source:

Rabbit

Isotype:

IgG

Immunogen Catalog Number:

AG21518

GenBank Accession Number:

BC017959

GeneID (NCBI):

79568

UNIPROT ID:

Q8WWC4

Full Name:

chromosome 2 open reading frame 47

Calculated MW:

291 aa, 33 kDa

Observed MW:

38 kDa

Purification Method:

Antigen affinity purification

Recommended Dilutions:

WB 1:500-1:1000

IHC 1:50-1:500

Applications

Tested Applications:

WB, IHC, ELISA

Cited Applications:

WB

Species Specificity:

human, mouse

Cited Species:

human, mouse

Note-IHC: suggested antigen retrieval with TE buffer pH 9.0; (*) Alternatively, antigen retrieval may be performed with citrate buffer pH 6.0

Positive Controls:

WB : mouse kidney tissue, HeLa cells, PC-3 cells

IHC : human kidney tissue,

Background Information

C2orf47, also named matrix AAA peptidase interacting protein 1 (MAIP1), is a 291 amino-acid protein that localizes in the Mitochondrion. C2orf47 is involved in protecting EMRE, a component of the single calcium complex (MCU), from proteolysis by assisting membrane insertion.

Notable Publications

Author	Pubmed ID	Journal	Application
Elias Adriaenssens	36690850	Nat Cell Biol	WB

Storage

Storage:

Store at -20°C. Stable for one year after shipment.

Storage Buffer:

PBS with 0.02% sodium azide and 50% glycerol pH 7.3.

Aliquoting is unnecessary for -20°C storage

*** 20ul sizes contain 0.1% BSA

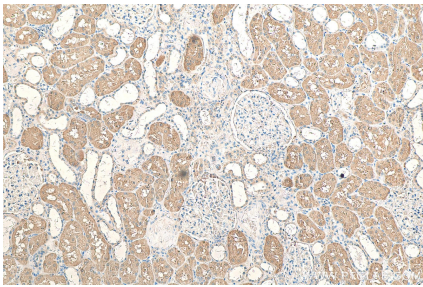
For technical support and original validation data for this product please contact:

T: 1 (888) 4PTGLAB (1-888-478-4522) (toll free in USA), or 1(312) 455-8498 (outside USA)

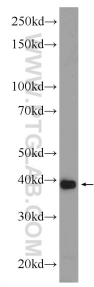
E: proteintech@ptglab.com
W: ptglab.com

This product is exclusively available under Proteintech Group brand and is not available to purchase from any other manufacturer.

Selected Validation Data



Immunohistochemical analysis of paraffin-embedded human kidney tissue slide using 24930-1-AP (C2orf47 antibody) at dilution of 1:200 (under 10x lens). Heat mediated antigen retrieval with Tris-EDTA buffer (pH 9.0).



mouse kidney tissue were subjected to SDS PAGE followed by western blot with 24930-1-AP (C2orf47 Antibody) at dilution of 1:600 incubated at room temperature for 1.5 hours.