

For Research Use Only

# RPL39L Polyclonal antibody

Catalog Number: 24940-1-AP



## Basic Information

<b>Catalog Number:</b> 24940-1-AP	<b>GenBank Accession Number:</b> BC012328	<b>Purification Method:</b> Antigen affinity purification
<b>Size:</b> 150ul , Concentration: 600 ug/ml by Nanodrop and 360 ug/ml by Bradford method using BSA as the standard;	<b>GeneID (NCBI):</b> 116832	<b>Recommended Dilutions:</b> WB 1:500-1:1000 IHC 1:20-1:200
<b>Source:</b> Rabbit	<b>UNIPROT ID:</b> Q96EH5	
<b>Isotype:</b> IgG	<b>Full Name:</b> ribosomal protein L39-like	
<b>Immunogen Catalog Number:</b> AG20923	<b>Calculated MW:</b> 51 aa, 6 kDa	
	<b>Observed MW:</b> 6 kDa	

## Applications

<b>Tested Applications:</b> WB, IHC, ELISA	<b>Positive Controls:</b>
<b>Species Specificity:</b> human	<b>WB :</b> HL-60 cells,
<b>Note-IHC:</b> suggested antigen retrieval with <b>TE buffer pH 9.0; (*)</b> Alternatively, antigen retrieval may be performed with <b>citrate buffer pH 6.0</b>	<b>IHC :</b> human testis tissue,

## Storage

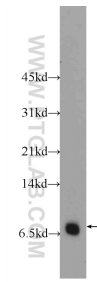
**Storage:**  
Store at -20°C. Stable for one year after shipment.  
**Storage Buffer:**  
PBS with 0.02% sodium azide and 50% glycerol pH 7.3.  
Aliquoting is unnecessary for -20°C storage

\*\*\* 20ul sizes contain 0.1% BSA

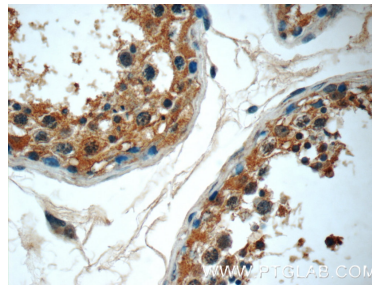
For technical support and original validation data for this product please contact:  
T: 1 (888) 4PTGLAB (1-888-478-4522) (toll free in USA), or 1(312) 455-8498 (outside USA)  
E: [proteintech@ptglab.com](mailto:proteintech@ptglab.com)  
W: [ptglab.com](http://ptglab.com)

This product is exclusively available under Proteintech Group brand and is not available to purchase from any other manufacturer.

## Selected Validation Data



HL-60 cells were subjected to SDS PAGE followed by western blot with 24940-1-AP (RPL39L Antibody) at dilution of 1:600 incubated at room temperature for 1.5 hours.



Immunohistochemical analysis of paraffin-embedded human testis tissue slide using 24940-1-AP (RPL39L Antibody) at dilution of 1:50 (under 40x lens).