

## KDM4A Polyclonal antibody

Catalog Number: 24943-1-AP

Featured Product

2 Publications

## Basic Information

## Catalog Number:

24943-1-AP

## Size:

150ul , Concentration: 450 µg/ml by Nanodrop and 253 µg/ml by Bradford method using BSA as the standard;

## Source:

Rabbit

## Isotype:

IgG

## Immunogen Catalog Number:

AG20747

## GenBank Accession Number:

BC002558

## GeneID (NCBI):

9682

## UNIPROT ID:

O75164

## Full Name:

lysine (K)-specific demethylase 4A

## Calculated MW:

1064 aa, 121 kDa

## Observed MW:

55 kDa

## Purification Method:

Antigen affinity purification

## Recommended Dilutions:

WB 1:200-1:1000

## Applications

## Tested Applications:

WB, ELISA

## Cited Applications:

WB, ChIP

## Species Specificity:

human, mouse

## Cited Species:

human, mouse

## Positive Controls:

WB : NIH/3T3 cells, MCF-7 cells

## Background Information

KDM4A also named as JHDM3A, JMJD2, or KIAA0677 is a 1066 amino acid protein, which contains one JmjC domain, two Tudor domains and two PHD-type zinc fingers. KDM4A localizes in nucleus and belongs to the JHDM3 histone demethylase family. KDM4A is histone de-methylase that specifically demethylates Lys 9 and Lys 36 residues of Histone H3, thereby playing a central role in histone code. JMJD2A demethylation of lysine residues will generate formaldehyde and succinate. KDM4A also participates in transcriptional repression of ASCL2 and E2F-responsive promoters via the recruitment of histone deacetylases and NCOR1, respectively. JMJD2A is a ubiquitously expressed nuclear protein. KDM4A exists as two isoforms. The short isoform of KDM4A in which the N-terminal demethylase domains has been deleted. The molecular weight of short isoform is 55Da.

## Notable Publications

Author	Pubmed ID	Journal	Application
Tiantian Zhao	35197855	Front Pharmacol	WB
Ming Kong	31014673	Biochem Biophys Res Commun	WB, ChIP

## Storage

## Storage:

Store at -20°C. Stable for one year after shipment.

## Storage Buffer:

PBS with 0.02% sodium azide and 50% glycerol pH 7.3.

Aliquoting is unnecessary for -20°C storage

\*\*\* 20ul sizes contain 0.1% BSA

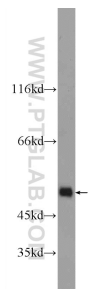
For technical support and original validation data for this product please contact:

T: 1 (888) 4PTGLAB (1-888-478-4522) (toll free in USA), or 1(312) 455-8498 (outside USA)

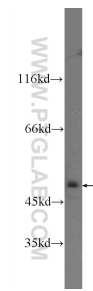
E: [proteintech@ptglab.com](mailto:proteintech@ptglab.com)  
W: [ptglab.com](http://ptglab.com)

This product is exclusively available under Proteintech Group brand and is not available to purchase from any other manufacturer.

# Selected Validation Data



NIH/3T3 cells were subjected to SDS PAGE followed by western blot with 24943-1-AP (KDM4A Antibody) at dilution of 1:300 incubated at room temperature for 1.5 hours.



MCF-7 cells were subjected to SDS PAGE followed by western blot with 24943-1-AP (KDM4A Antibody) at dilution of 1:300 incubated at room temperature for 1.5 hours.