

For Research Use Only

PRPF38A Polyclonal antibody

Catalog Number: 24946-1-AP



Basic Information

Catalog Number: 24946-1-AP	GenBank Accession Number: BC000777	Purification Method: Antigen affinity purification
Size: 150ul , Concentration: 500 µg/ml by Nanodrop and 200 µg/ml by Bradford method using BSA as the standard;	GeneID (NCBI): 84950	Recommended Dilutions: WB 1:200-1:1000 IF 1:20-1:200
Source: Rabbit	Full Name: PRP38 pre-mRNA processing factor 38 (yeast) domain containing A	
Isotype: IgG	Calculated MW: 312 aa, 37 kDa	
Immunogen Catalog Number: AG20980	Observed MW: 37-40 kDa	

Applications

Tested Applications: IF, WB, ELISA	Positive Controls:
Species Specificity: human	WB : K-562 cells, HepG2 cells IF : HepG2 cells,

Background Information

Storage

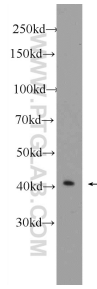
Storage:
Store at -20°C. Stable for one year after shipment.
Storage Buffer:
PBS with 0.02% sodium azide and 50% glycerol pH 7.3.
Aliquoting is unnecessary for -20°C storage

*** 20ul sizes contain 0.1% BSA

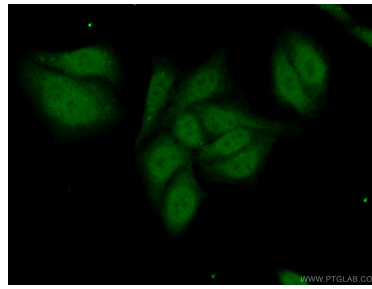
For technical support and original validation data for this product please contact:
T: 1 (888) 4PTGLAB (1-888-478-4522) (toll free in USA), or 1(312) 455-8498 (outside USA)
E: proteintech@ptglab.com
W: ptglab.com

This product is exclusively available under Proteintech Group brand and is not available to purchase from any other manufacturer.

Selected Validation Data



K-562 cells were subjected to SDS PAGE followed by western blot with 24946-1-AP (PRPF38A Antibody) at dilution of 1:300 incubated at room temperature for 1.5 hours.



Immunofluorescent analysis of (10% Formaldehyde) fixed HepG2 cells using 24946-1-AP (PRPF38A antibody) at dilution of 1:50 and Alexa Fluor 488-conjugated AffiniPure Goat Anti-Rabbit IgG(H+L).