

For Research Use Only

C10orf28 Polyclonal antibody

Catalog Number: 24967-1-AP



Basic Information

Catalog Number: 24967-1-AP	GenBank Accession Number: BC098359	Purification Method: Antigen affinity purification
Size: 150ul , Concentration: 650 µg/ml by Nanodrop and 313 µg/ml by Bradford method using BSA as the standard;	GeneID (NCBI): 27291	Recommended Dilutions: WB 1:200-1:1000 IHC 1:20-1:200 IF 1:10-1:100
Source: Rabbit	Full Name: chromosome 10 open reading frame 28	
Isotype: IgG	Calculated MW: 792 aa, 88 kDa	
Immunogen Catalog Number: AG21740	Observed MW: 110 kDa	

Applications

Tested Applications: IF, IHC, WB, ELISA	Positive Controls: WB : A549 cells, A431 cells IHC : human small intestine tissue, IF : HepG2 cells,
Species Specificity: human	
Note-IHC: suggested antigen retrieval with TE buffer pH 9.0; (*) Alternatively, antigen retrieval may be performed with citrate buffer pH 6.0	

Background Information

Storage

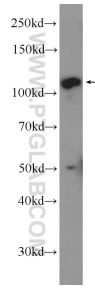
Storage:
Store at -20°C. Stable for one year after shipment.
Storage Buffer:
PBS with 0.02% sodium azide and 50% glycerol pH 7.3.
Aliquoting is unnecessary for -20°C storage

*** 20ul sizes contain 0.1% BSA

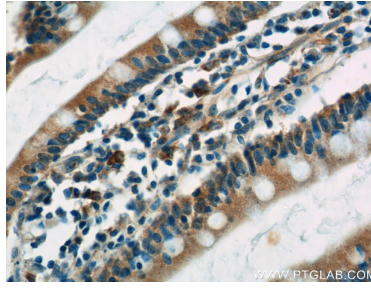
For technical support and original validation data for this product please contact:
T: 1 (888) 4PTGLAB (1-888-478-4522) (toll free in USA), or 1(312) 455-8498 (outside USA) E: proteintech@ptglab.com
W: ptglab.com

This product is exclusively available under Proteintech Group brand and is not available to purchase from any other manufacturer.

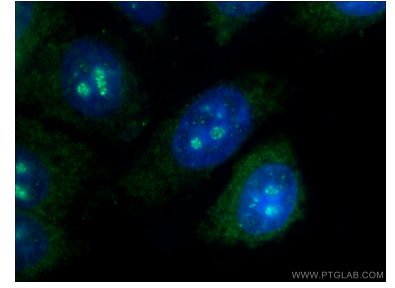
Selected Validation Data



A549 cells were subjected to SDS PAGE followed by western blot with 24967-1-AP (C10orf28 Antibody) at dilution of 1:300 incubated at room temperature for 1.5 hours.



Immunohistochemical analysis of paraffin-embedded human small intestine tissue slide using 24967-1-AP (C10orf28 Antibody) at dilution of 1:50 (under 40x lens).



Immunofluorescent analysis of HepG2 cells using 24967-1-AP (C10orf28 antibody) at dilution of 1:25 and Alexa Fluor 488-conjugated AffiniPure Goat Anti-Rabbit IgG(H+L).