

For Research Use Only

KHDC3L Polyclonal antibody

Catalog Number: 24989-1-AP



Basic Information

Catalog Number: 24989-1-AP	GenBank Accession Number: BC137160	Purification Method: Antigen affinity purification
Size: 150ul , Concentration: 1000 ug/ml by Nanodrop and 467 ug/ml by Bradford method using BSA as the standard;	GeneID (NCBI): 154288	Recommended Dilutions: WB: 1:500-1:1000
Source: Rabbit	UNIPROT ID: Q587J8	IHC: 1:50-1:500
Isotype: IgG	Full Name: chromosome 6 open reading frame 221	IF/ICC: 1:50-1:500
Immunogen Catalog Number: AG21790	Calculated MW: 217 aa, 24 kDa	
	Observed MW: 21-24 kDa	

Applications

Tested Applications: WB, IHC, IF/ICC, ELISA	Positive Controls:
Species Specificity: human	WB : human testis tissue,
Note-IHC: suggested antigen retrieval with TE buffer pH 9.0; (*) Alternatively, antigen retrieval may be performed with citrate buffer pH 6.0	IHC : human colon cancer tissue, human liver cancer tissue
	IF/ICC : HepG2 cells,

Background Information

KHDC3L (also known as Filia and ES cell-associated transcript1 [Ecat1]) as a key regulator in safeguarding the genomic stability of mouse early embryonic cells. KHDC3L is critical in preventing the replication associated DNA DSBs in epiblast cells (PMID: 29125140). Importantly, by analyzing KHDC3L mutations causes recurrent pregnancy loss by inducing genomic instability of human early embryonic cells (PMID: 31609975).

Storage

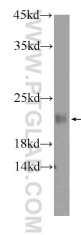
Storage:
Store at -20°C. Stable for one year after shipment.
Storage Buffer:
PBS with 0.02% sodium azide and 50% glycerol, pH7.3
Aliquoting is unnecessary for -20°C storage

*** 20ul sizes contain 0.1% BSA

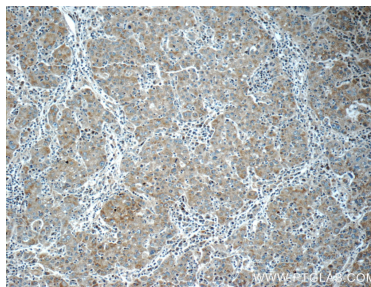
For technical support and original validation data for this product please contact:
T: 1 (888) 4PTGLAB (1-888-478-4522) (toll free in USA), or 1(312) 455-8498 (outside USA)
E: proteintech@ptglab.com
W: ptglab.com

This product is exclusively available under Proteintech Group brand and is not available to purchase from any other manufacturer.

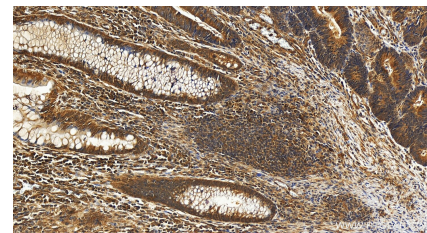
Selected Validation Data



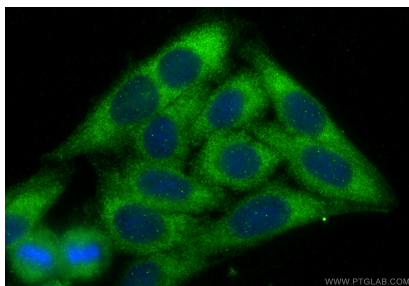
human testis tissue were subjected to SDS PAGE followed by western blot with 24989-1-AP (KHDC3L antibody at dilution of 1:600 incubated at room temperature for 1.5 hours.



Immunohistochemical analysis of paraffin-embedded human liver cancer tissue slide using 24989-1-AP (KHDC3L antibody at dilution of 1:50 (under 10x lens).



Immunohistochemical analysis of paraffin-embedded human colon cancer tissue slide using 24989-1-AP (KHDC3L antibody) at dilution of 1:200 (under 20x lens). Heat mediated antigen retrieval with Tris-EDTA buffer (pH 9.0).



Immunofluorescent analysis of (-20°C Ethanol) fixed HepG2 cells using KHDC3L antibody (24989-1-AP) at dilution of 1:200 and CoraLite®488-Conjugated Goat Anti-Rabbit IgG(H+L) (SA00013-2).