

For Research Use Only

# AUTS2 Polyclonal antibody

Catalog Number: 25001-1-AP

5 Publications



## Basic Information

### Catalog Number:

25001-1-AP

### Size:

150ul, Concentration: 800 µg/ml by Nanodrop and 453 µg/ml by Bradford method using BSA as the standard;

### Source:

Rabbit

### Isotype:

IgG

### Immunogen Catalog Number:

AG21853

### GenBank Accession Number:

BC064693

### GeneID (NCBI):

26053

### UNIPROT ID:

Q8WXX7

### Full Name:

autism susceptibility candidate 2

### Calculated MW:

139 kDa

### Observed MW:

70 kDa, 130-140 kDa

### Purification Method:

Antigen affinity purification

### Recommended Dilutions:

WB 1:500-1:1000

## Applications

### Tested Applications:

WB, ELISA

### Cited Applications:

WB, IF, ChIP

### Species Specificity:

human, mouse, rat

### Cited Species:

human, mouse

### Positive Controls:

WB : C6 cells, NIH/3T3 cells

## Background Information

AUTS2 also named as FBRSL2 or autism susceptibility candidate 2 is a 1259 amino acid protein, which belongs to the AUTS2 family. AUTS2 is highly expressed in brain, kidney and skeletal muscle. AUTS2 exists as four isoforms produced by alternative splicing events and is encoded by a gene located on human chromosome 7. The molecular weight of AUTS2 isoform is 65-70 kDa in the brain (PMID:23332918). The functional role of AUTS2 is not well known, although some studies have identified a putative role in transcriptional regulation during neuronal development.

## Notable Publications

Author	Pubmed ID	Journal	Application
Fangkun Liu	30599272	Neuroscience	IF
Min Liu	36525998	Exp Neurol	WB
Jing Huang	29270148	Front Neurol	IF

## Storage

### Storage:

Store at -20°C. Stable for one year after shipment.

### Storage Buffer:

PBS with 0.02% sodium azide and 50% glycerol pH 7.3.

Aliquoting is unnecessary for -20°C storage

\*\*\* 20ul sizes contain 0.1% BSA

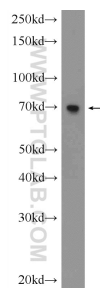
For technical support and original validation data for this product please contact:

T: 1 (888) 4PTGLAB (1-888-478-4522) (toll free in USA), or 1(312) 455-8498 (outside USA)

E: [proteintech@ptglab.com](mailto:proteintech@ptglab.com)  
W: [ptglab.com](http://ptglab.com)

This product is exclusively available under Proteintech Group brand and is not available to purchase from any other manufacturer.

## Selected Validation Data



C6 cells were subjected to SDS PAGE followed by western blot with 25001-1-AP (AUTS2 Antibody) at dilution of 1:600 incubated at room temperature for 1.5 hours.