

For Research Use Only

RPL22 Polyclonal antibody

Catalog Number: 25002-1-AP

Featured Product

7 Publications



Basic Information

Catalog Number:
25002-1-AP

Size:
150ul, Concentration: 600 µg/ml by Nanodrop and 327 µg/ml by Bradford method using BSA as the standard;

Source:
Rabbit

Isotype:
IgG

Immunogen Catalog Number:
AG21851

GenBank Accession Number:
BC058887

GeneID (NCBI):
6146

Full Name:
ribosomal protein L22

Calculated MW:
15 kDa

Observed MW:
15-18 kDa

Purification Method:
Antigen affinity purification

Recommended Dilutions:
WB 1:500-1:1000
IP 0.5-4.0 µg for IP and 1:500-1:1000 for WB
IF 1:20-1:200

Applications

Tested Applications:
IF, IP, WB, ELISA

Cited Applications:
IF, IP, WB

Species Specificity:
human

Cited Species:
human, mouse

Positive Controls:

WB: A431 cells, HeLa cells, HepG2 cells, Jurkat cells

IP: A431 cells,

IF: HeLa cells,

Background Information

Notable Publications

Author	Pubmed ID	Journal	Application
Naomi R Genuth	36123354	Nat Commun	WB
Yujuan Fu	36282216	J Cell Biol	WB
Suman Rimal	34663454	Acta Neuropathol Commun	WB, IP, IF

Storage

Storage:

Store at -20°C. Stable for one year after shipment.

Storage Buffer:

PBS with 0.02% sodium azide and 50% glycerol pH 7.3.

Aliquoting is unnecessary for -20°C storage

*** 20ul sizes contain 0.1% BSA

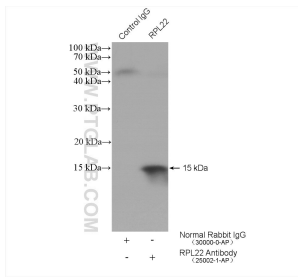
For technical support and original validation data for this product please contact:

T: 1 (888) 4PTGLAB (1-888-478-4522) (toll free in USA), or 1(312) 455-8498 (outside USA)

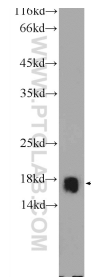
E: proteintech@ptglab.com
W: ptglab.com

This product is exclusively available under Proteintech Group brand and is not available to purchase from any other manufacturer.

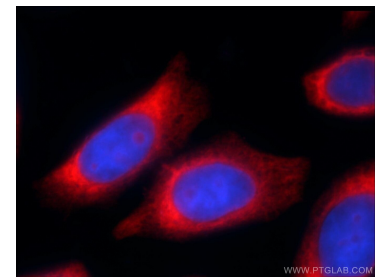
Selected Validation Data



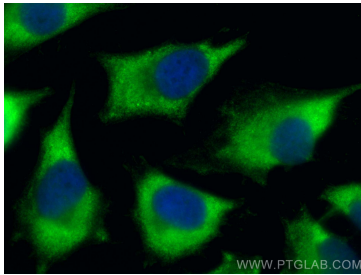
IP result of anti-RPL22 (IP:25002-1-AP, 4ug; Detection:25002-1-AP 1:500) with A431 cells lysate 1920 ug.



A431 cells were subjected to SDS PAGE followed by western blot with 25002-1-AP (RPL22 Antibody) at dilution of 1:600 incubated at room temperature for 1.5 hours.



Immunofluorescent analysis of HeLa cells using 25002-1-AP (RPL22 antibody) at dilution of 1:50 and Rhodamine-Goat anti-Rabbit IgG.



Immunofluorescent analysis of (-20°C Methanol) fixed HeLa cells using RPL22 antibody (25002-1-AP) at dilution of 1:200 and CoraLite®488-Conjugated AffiniPure Goat Anti-Rabbit IgG(H+L).