

For Research Use Only

PIPPIN Polyclonal antibody

Catalog Number: 25013-1-AP



Basic Information

Catalog Number: 25013-1-AP	GenBank Accession Number: BC067113	Purification Method: Antigen affinity purification
Size: 150ul , Concentration: 1000 µg/ml by Nanodrop and 493 µg/ml by Bradford method using BSA as the standard;	GeneID (NCBI): 27254	Recommended Dilutions: WB 1:500-1:1000 IHC 1:20-1:200
Source: Rabbit	Full Name: cold shock domain containing C2, RNA binding	
Isotype: IgG	Calculated MW: 153 aa, 17 kDa	
Immunogen Catalog Number: AG16216	Observed MW: 30 kDa	

Applications

Tested Applications:

IHC, WB, ELISA

Species Specificity:

human, mouse

Note-IHC: suggested antigen retrieval with TE buffer pH 9.0; (*) Alternatively, antigen retrieval may be performed with citrate buffer pH 6.0

Positive Controls:

WB : mouse brain tissue,

IHC : human kidney tissue,

Background Information

CSDC2 also termed as PIPPIN or RNA binding protein PIPPin is a 153 amino acid protein, which contains 1 CSD domain. CSDC2 may play a central role in the negative regulation of variant synthesis in the developing brain. CSDC2 modification in response to extracellular stimuli may modulate the regulation of protein synthesis.

Storage

Storage:

Store at -20°C. Stable for one year after shipment.

Storage Buffer:

PBS with 0.02% sodium azide and 50% glycerol pH 7.3.

Aliquoting is unnecessary for -20°C storage

*** 20ul sizes contain 0.1% BSA

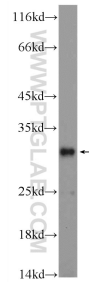
For technical support and original validation data for this product please contact:

T: 1 (888) 4PTGLAB (1-888-478-4522) (toll free in USA), or 1(312) 455-8498 (outside USA)

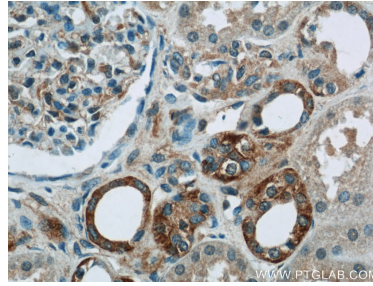
E: proteintech@ptglab.com
W: ptglab.com

This product is exclusively available under Proteintech Group brand and is not available to purchase from any other manufacturer.

Selected Validation Data



mouse brain tissue were subjected to SDS PAGE followed by western blot with 25013-1-AP (PIPPIN antibody at dilution of 1:600 incubated at room temperature for 1.5 hours.



Immunohistochemical analysis of paraffin-embedded human kidney tissue slide using 25013-1-AP (PIPPIN antibody at dilution of 1:50 (under 40x lens).