

For Research Use Only

LRCH1 Polyclonal antibody

Catalog Number: 25017-1-AP



Basic Information

Catalog Number:

25017-1-AP

Size:

150ul, Concentration: 850 ug/ml by Nanodrop and 333 ug/ml by Bradford method using BSA as the standard;

Source:

Rabbit

Isotype:

IgG

Immunogen Catalog Number:

AG18728

GenBank Accession Number:

BC112937

GeneID (NCBI):

23143

UNIPROT ID:

Q9Y2L9

Full Name:

leucine-rich repeats and calponin homology (CH) domain containing 1

Calculated MW:

728 aa, 80 kDa

Observed MW:

85-95 kDa

Purification Method:

Antigen affinity purification

Recommended Dilutions:

WB 1:500-1:2000

IP 0.5-4.0 ug for 1.0-3.0 mg of total protein lysate

IHC 1:50-1:500

IF/ICC 1:50-1:500

Applications

Tested Applications:

WB, IHC, IF/ICC, IP, ELISA

Species Specificity:

human, mouse

Note-IHC: suggested antigen retrieval with TE buffer pH 9.0; (*) Alternatively, antigen retrieval may be performed with citrate buffer pH 6.0

Positive Controls:

WB: HeLa cells,

IP: HeLa cells,

IHC: mouse cerebellum tissue,

IF/ICC: MCF-7 cells,

Background Information

LRCH1, also named as CHDC1 or Neuronal protein 81, is a 728 amino acid protein, which contains one CH domain and nine LRR repeats. The molecular weight of LRCH1 is 81 kDa and it contains phosphorylation modified residues. we detected a 85-95 kDa protein by western blot. The function of LRCH1 is still non-known.

Storage

Storage:

Store at -20°C. Stable for one year after shipment.

Storage Buffer:

PBS with 0.02% sodium azide and 50% glycerol pH 7.3.

Aliquoting is unnecessary for -20°C storage

*** 20ul sizes contain 0.1% BSA

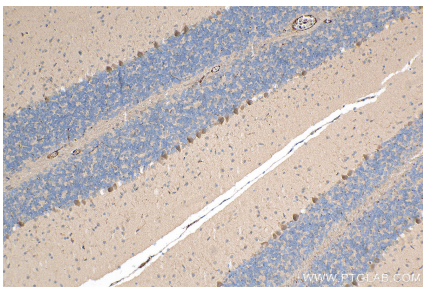
For technical support and original validation data for this product please contact:

T: 1 (888) 4PTGLAB (1-888-478-4522) (toll free in USA), or 1(312) 455-8498 (outside USA)

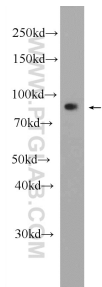
E: proteintech@ptglab.com
W: ptglab.com

This product is exclusively available under Proteintech Group brand and is not available to purchase from any other manufacturer.

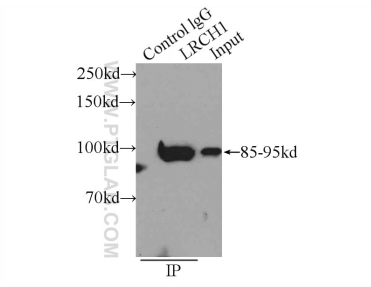
Selected Validation Data



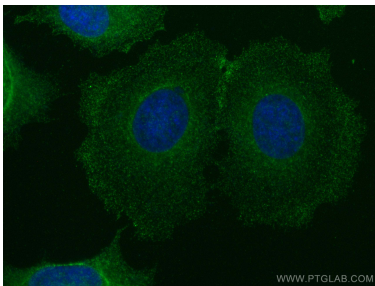
Immunohistochemical analysis of paraffin-embedded mouse cerebellum tissue slide using 25017-1-AP (LRCH1 antibody) at dilution of 1:200 (under 10x lens). Heat mediated antigen retrieval with Tris-EDTA buffer (pH 9.0).



HeLa cells were subjected to SDS PAGE followed by western blot with 25017-1-AP (LRCH1 Antibody) at dilution of 1:1000 incubated at room temperature for 1.5 hours.



IP result of anti-LRCH1 (IP:25017-1-AP, 4ug; Detection:25017-1-AP 1:300) with HeLa cells lysate 1600ug.



Immunofluorescent analysis of (-20°C Methanol) fixed MCF-7 cells using LRCH1 antibody (25017-1-AP) at dilution of 1:200 and CoraLite®488-Conjugated AffiniPure Goat Anti-Rabbit IgG(H+L) (SA00013-2).