

For Research Use Only

PAG1 Polyclonal antibody

Catalog Number: 25029-1-AP



Basic Information

Catalog Number:

25029-1-AP

Size:

150ul, Concentration: 450 ug/ml by Nanodrop and 200 ug/ml by Bradford method using BSA as the standard;

Source:

Rabbit

Isotype:

IgG

Immunogen Catalog Number:

AG13393

GenBank Accession Number:

BC112159

GeneID (NCBI):

55824

UNIPROT ID:

Q9NWQ8

Full Name:

phosphoprotein associated with glycosphingolipid microdomains 1

Calculated MW:

432 aa, 47 kDa

Observed MW:

50-60 kDa

Purification Method:

Antigen affinity purification

Recommended Dilutions:

WB 1:500-1:2000

IHC 1:50-1:500

Applications

Tested Applications:

WB, IHC, ELISA

Species Specificity:

human, mouse

Note-IHC: suggested antigen retrieval with TE buffer pH 9.0; (*) Alternatively, antigen retrieval may be performed with citrate buffer pH 6.0

Positive Controls:

WB : mouse brain tissue,

IHC : human ovary cancer tissue,

Background Information

PAG1, also named as CBP and PAG, promotes CSK activation and recruitment to lipid rafts, which results in LCK inhibition. It is involved in cell adhesion signaling. PAG1 may play an important role in inhibiting the proliferation, invasion and metastasis of the cancer cells. PAG1 is a membrane protein with phosphor modification. The MW of PAG1 migrates to 50-65 kDa in WB detection.

Storage

Storage:

Store at -20°C. Stable for one year after shipment.

Storage Buffer:

PBS with 0.02% sodium azide and 50% glycerol pH 7.3.

Aliquoting is unnecessary for -20°C storage

*** 20ul sizes contain 0.1% BSA

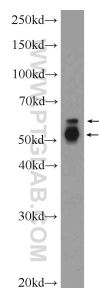
For technical support and original validation data for this product please contact:

T: 1 (888) 4PTGLAB (1-888-478-4522) (toll free in USA), or 1(312) 455-8498 (outside USA)

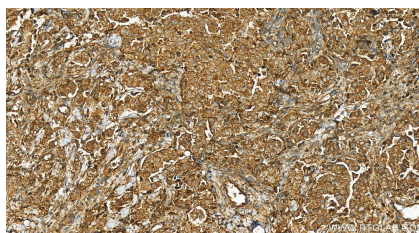
E: proteintech@ptglab.com
W: ptglab.com

This product is exclusively available under Proteintech Group brand and is not available to purchase from any other manufacturer.

Selected Validation Data



mouse brain tissue were subjected to SDS PAGE followed by western blot with 25029-1-AP (PAG1 Antibody) at dilution of 1:1000 incubated at room temperature for 1.5 hours.



Immunohistochemical analysis of paraffin-embedded human ovary cancer tissue slide using 25029-1-AP (PAG1 antibody) at dilution of 1:200 (under 20x lens). Heat mediated antigen retrieval with Tris-EDTA buffer (pH 9.0).