

For Research Use Only

TPPP Polyclonal antibody

Catalog Number: 25040-1-AP

Featured Product



Basic Information

Catalog Number:

25040-1-AP

Size:

150ul, Concentration: 500 ug/ml by Nanodrop and 347 ug/ml by Bradford method using BSA as the standard;

Source:

Rabbit

Isotype:

IgG

Immunogen Catalog Number:

AG19159

GenBank Accession Number:

BC131506

GeneID (NCBI):

11076

UNIPROT ID:

O94811

Full Name:

tubulin polymerization promoting protein

Calculated MW:

219 aa, 24 kDa

Observed MW:

24-29 kDa

Purification Method:

Antigen affinity purification

Recommended Dilutions:

WB 1:5000-1:50000

IHC 1:20-1:200

IF/ICC 1:200-1:800

Applications

Tested Applications:

WB, IHC, IF/ICC, ELISA

Species Specificity:

human, mouse, rat

Note-IHC: suggested antigen retrieval with TE buffer pH 9.0; (*) Alternatively, antigen retrieval may be performed with citrate buffer pH 6.0

Positive Controls:

WB : mouse brain tissue, MCF-7 cells, rat brain tissue

IHC : human brain tissue, human breast cancer tissue

IF/ICC : MCF-7 cells,

Storage

Storage:

Store at -20°C. Stable for one year after shipment.

Storage Buffer:

PBS with 0.02% sodium azide and 50% glycerol pH 7.3.

Aliquoting is unnecessary for -20°C storage

*** 20ul sizes contain 0.1% BSA

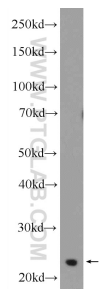
For technical support and original validation data for this product please contact:

T: 1 (888) 4PTGLAB (1-888-478-4522) (toll free in USA), or 1(312) 455-8498 (outside USA)

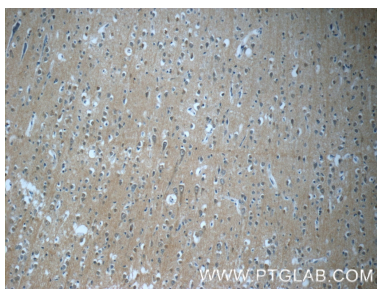
E: proteintech@ptglab.com
W: ptglab.com

This product is exclusively available under Proteintech Group brand and is not available to purchase from any other manufacturer.

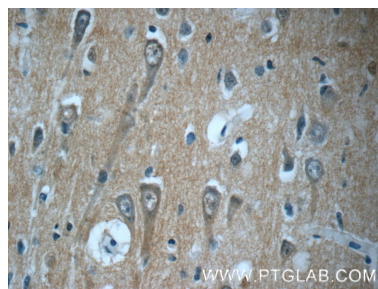
Selected Validation Data



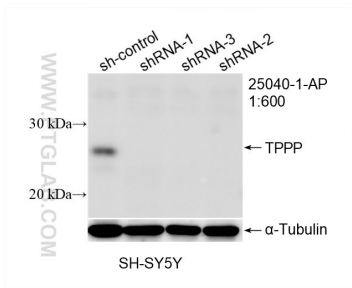
MCF-7 cells were subjected to SDS PAGE followed by western blot with 25040-1-AP (TPPP Antibody) at dilution of 1:1000 incubated at room temperature for 1.5 hours.



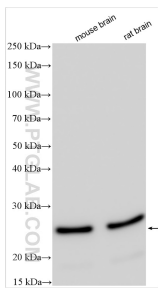
Immunohistochemical analysis of paraffin-embedded human brain tissue slide using 25040-1-AP (TPPP Antibody) at dilution of 1:50 (under 10x lens).



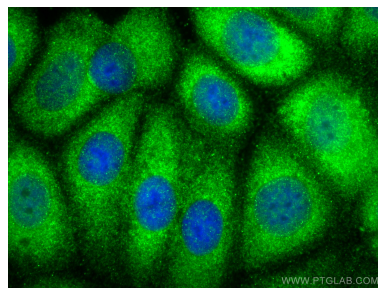
Immunohistochemical analysis of paraffin-embedded human brain tissue slide using 25040-1-AP (TPPP Antibody) at dilution of 1:50 (under 40x lens).



WB result of TPPP antibody (25040-1-AP; 1:600; incubated at room temperature for 1.5 hours) with sh-Control and sh-TPPP transfected SH-SY5Y cells.



Various lysates were subjected to SDS PAGE followed by western blot with 25040-1-AP (TPPP antibody) at dilution of 1:20000 incubated at room temperature for 1.5 hours.



Immunofluorescent analysis of (-20°C Methanol) fixed MCF-7 cells using TPPP antibody (25040-1-AP) at dilution of 1:400 and CoraLite®488-Conjugated Goat Anti-Rabbit IgG(H+L).