

For Research Use Only

LPP Polyclonal antibody

Catalog Number: 25045-1-AP **1 Publications**



Basic Information

Catalog Number: 25045-1-AP	GenBank Accession Number: BC130584	Purification Method: Antigen affinity purification
Size: 150ul , Concentration: 600 µg/ml by Nanodrop and 333 µg/ml by Bradford method using BSA as the standard;	GeneID (NCBI): 4026	Recommended Dilutions: WB 1:2000-1:10000 IP 0.5-4.0 ug for IP and 1:500-1:2000 for WB
Source: Rabbit	Full Name: LIM domain containing preferred translocation partner in lipoma	IHC 1:20-1:200 IF 1:10-1:100
Isotype: IgG	Calculated MW: 612 aa, 66 kDa	
Immunogen Catalog Number: AG19205	Observed MW: 70-75 kDa	

Applications

Tested Applications:
FC, IF, IHC, IP, WB, ELISA

Cited Applications:
IF, IHC, WB

Species Specificity:
human, mouse, rat

Cited Species:
human

Note-IHC: suggested antigen retrieval with TE buffer pH 9.0; (*) Alternatively, antigen retrieval may be performed with citrate buffer pH 6.0

Positive Controls:

WB : HeLa cells, MCF-7 cells, NIH/3T3 cells, mouse colon, mouse heart, rat heart

IP : HeLa cells,

IHC : human small intestine tissue, human kidney tissue

IF : HeLa cells,

Background Information

Notable Publications

Author	Pubmed ID	Journal	Application
Kanghua Xiao	37422473	Cell Death Dis	WB,IHC,IF

Storage

Storage:

Store at -20°C. Stable for one year after shipment.

Storage Buffer:

PBS with 0.02% sodium azide and 50% glycerol pH 7.3.

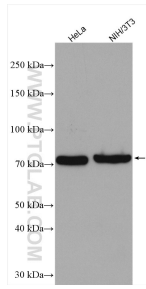
Aliquoting is unnecessary for -20°C storage

***** 20ul sizes contain 0.1% BSA**

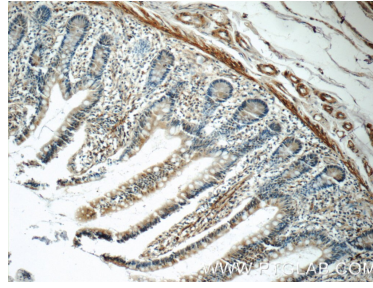
For technical support and original validation data for this product please contact:
T: 1 (888) 4PTGLAB (1-888-478-4522) (toll free in USA), or 1(312) 455-8498 (outside USA) E: proteintech@ptglab.com W: ptglab.com

This product is exclusively available under Proteintech Group brand and is not available to purchase from any other manufacturer.

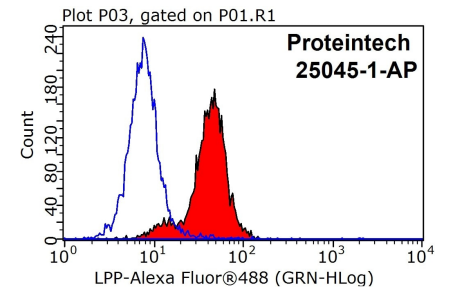
Selected Validation Data



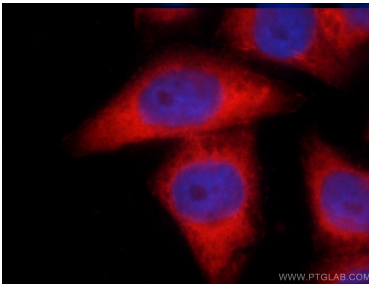
Various lysates were subjected to SDS PAGE followed by western blot with 25045-1-AP (LPP antibody) at dilution of 1:5000 incubated at room temperature for 1.5 hours.



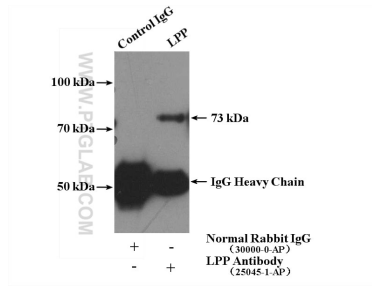
Immunohistochemical analysis of paraffin-embedded human small intestine tissue slide using 25045-1-AP (LPP Antibody) at dilution of 1:50 (under 10x lens).



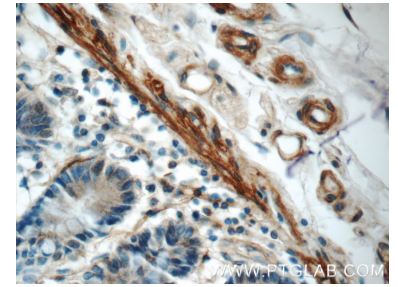
1X10⁶ HeLa cells were stained with 0.05ug LPP antibody (25045-1-AP, red) and control antibody (blue). Fixed with 90% MeOH blocked with 3% BSA (30 min). Alexa Fluor 488-Goat anti-Rabbit IgG with dilution 1:100.



Immunofluorescent analysis of HeLa cells using 25045-1-AP (LPP antibody) at dilution of 1:25 and Rhodamine-Goat anti-Rabbit IgG.



IP Result of anti-LPP (IP:25045-1-AP, 4ug; Detection:25045-1-AP 1:1000) with HeLa cells lysate 3200ug.



Immunohistochemical analysis of paraffin-embedded human small intestine tissue slide using 25045-1-AP (LPP Antibody) at dilution of 1:50 (under 40x lens).