

For Research Use Only

# FEV Polyclonal antibody

Catalog Number: 25058-1-AP

1 Publications



## Basic Information

Catalog Number:

25058-1-AP

Size:

150ul, Concentration: 800 ug/ml by Nanodrop and 447 ug/ml by Bradford method using BSA as the standard;

Source:

Rabbit

Isotype:

IgG

Immunogen Catalog Number:

AG20647

GenBank Accession Number:

BC023511

GeneID (NCBI):

54738

UNIPROT ID:

Q99581

Full Name:

FEV (ETS oncogene family)

Calculated MW:

25 kDa

Observed MW:

25 kDa

Purification Method:

Antigen affinity purification

Recommended Dilutions:

WB 1:500-1:2000

## Applications

Tested Applications:

WB, ELISA

Cited Applications:

IHC

Species Specificity:

human, mouse

Cited Species:

mouse

Positive Controls:

WB : fetal human brain tissue, mouse brain tissue

## Background Information

FEV belongs to the ETS transcription factor family. ETS family members have a highly conserved 85-amino acid ETS domain that binds purine-rich DNA sequences. The alanine-rich C-terminus of this gene indicates that it may act as a transcription repressor. This gene is exclusively expressed in neurons of the central serotonin (5-HT) system, a system implicated in the pathogeny of such psychiatric diseases as depression, anxiety, and eating disorders. In some types of Ewing tumors, this gene is fused to the Ewing sarcoma (EWS) gene following chromosome translocations.

## Notable Publications

Author	Pubmed ID	Journal	Application
Joshua E Burda	35614216	Nature	IHC

## Storage

Storage:

Store at -20°C. Stable for one year after shipment.

Storage Buffer:

PBS with 0.02% sodium azide and 50% glycerol pH 7.3.

Aliquoting is unnecessary for -20°C storage

\*\*\* 20ul sizes contain 0.1% BSA

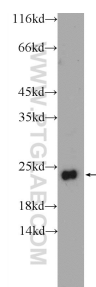
For technical support and original validation data for this product please contact:

T: 1 (888) 4PTGLAB (1-888-478-4522) (toll free in USA), or 1(312) 455-8498 (outside USA)

E: [proteintech@ptglab.com](mailto:proteintech@ptglab.com)  
W: [ptglab.com](http://ptglab.com)

This product is exclusively available under Proteintech Group brand and is not available to purchase from any other manufacturer.

## Selected Validation Data



fetal human brain tissue were subjected to SDS PAGE followed by western blot with 25058-1-AP (FEV Antibody) at dilution of 1:1000 incubated at room temperature for 1.5 hours.