

For Research Use Only

KLHL15 Polyclonal antibody

Catalog Number: 25066-1-AP **1 Publications**



Basic Information

Catalog Number: 25066-1-AP	GenBank Accession Number: BC109058	Purification Method: Antigen affinity purification
Size: 150ul , Concentration: 650 µg/ml by Nanodrop and 347 µg/ml by Bradford method using BSA as the standard;	GeneID (NCBI): 80311	Recommended Dilutions: WB 1:500-1:1000 IHC 1:20-1:200
Source: Rabbit	Full Name: kelch-like 15 (Drosophila)	
Isotype: IgG	Calculated MW: 604 aa, 70 kDa	
Immunogen Catalog Number: AG16878	Observed MW: 70 kDa	

Applications

Tested Applications: IHC, WB, ELISA	Positive Controls: WB : HeLa cells, HEK-293 cells
Cited Applications: WB	IHC : human brain tissue, human testis tissue
Species Specificity: human	
Cited Species: human	

Note-IHC: suggested antigen retrieval with TE buffer pH 9.0; (*) Alternatively, antigen retrieval may be performed with citrate buffer pH 6.0

Background Information

Notable Publications

Author	Pubmed ID	Journal	Application
Chuanchao Zhang	35219381	Mol Cell	WB

Storage

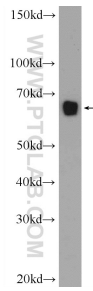
Storage:
Store at -20°C. Stable for one year after shipment.
Storage Buffer:
PBS with 0.02% sodium azide and 50% glycerol pH 7.3.
Aliquoting is unnecessary for -20°C storage

*** 20ul sizes contain 0.1% BSA

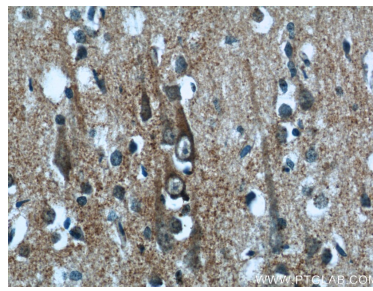
For technical support and original validation data for this product please contact:
T: 1 (888) 4PTGLAB (1-888-478-4522) (toll free in USA), or 1(312) 455-8498 (outside USA) E: proteintech@ptglab.com W: ptglab.com

This product is exclusively available under Proteintech Group brand and is not available to purchase from any other manufacturer.

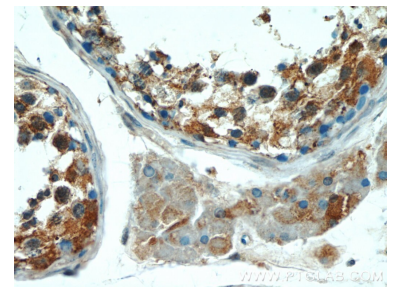
Selected Validation Data



HeLa cells were subjected to SDS PAGE followed by western blot with 25066-1-AP (KLHL15 Antibody) at dilution of 1:600 incubated at room temperature for 1.5 hours.



Immunohistochemical analysis of paraffin-embedded human brain tissue slide using 25066-1-AP (KLHL15 Antibody) at dilution of 1:50 (under 40x lens).



Immunohistochemical analysis of paraffin-embedded human testis tissue slide using 25066-1-AP (KLHL15 Antibody) at dilution of 1:50 (under 40x lens).