

For Research Use Only

# SIPA1L1 Polyclonal antibody

Catalog Number: 25086-1-AP

3 Publications



## Basic Information

### Catalog Number:

25086-1-AP

### Size:

150ul, Concentration: 700 ug/ml by Nanodrop and 307 ug/ml by Bradford method using BSA as the standard;

### Source:

Rabbit

### Isotype:

IgG

### Immunogen Catalog Number:

AG18900

### GenBank Accession Number:

BC146777

### GeneID (NCBI):

26037

### UNIPROT ID:

O43166

### Full Name:

signal-induced proliferation-associated 1 like 1

### Calculated MW:

1803 aa, 200 kDa

### Observed MW:

200 kDa

### Purification Method:

Antigen affinity purification

### Recommended Dilutions:

WB 1:1000-1:6000

IP 0.5-4.0 ug for 1.0-3.0 mg of total protein lysate

IHC 1:50-1:500

## Applications

### Tested Applications:

WB, IHC, IP, ELISA

### Cited Applications:

WB, IF, IP

### Species Specificity:

human, mouse, rat

### Cited Species:

human, mouse

**Note-IHC: suggested antigen retrieval with TE buffer pH 9.0; (\*) Alternatively, antigen retrieval may be performed with citrate buffer pH 6.0**

### Positive Controls:

WB : mouse brain tissue, HeLa cells, rat brain tissue

IP : mouse brain tissue,

IHC : human brain tissue, human pancreas tissue

## Notable Publications

Author	Pubmed ID	Journal	Application
Sophie Laguesse	28890345	Neuron	WB,IP
Chenyu Xu	39361424	JCI Insight	WB,IF
Zachary W Hoisington	38915579	bioRxiv	WB

## Storage

### Storage:

Store at -20°C. Stable for one year after shipment.

### Storage Buffer:

PBS with 0.02% sodium azide and 50% glycerol pH 7.3.

Aliquoting is unnecessary for -20°C storage

\*\*\* 20ul sizes contain 0.1% BSA

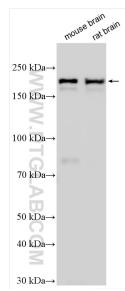
For technical support and original validation data for this product please contact:

T: 1 (888) 4PTGLAB (1-888-478-4522) (toll free in USA), or 1(312) 455-8498 (outside USA)

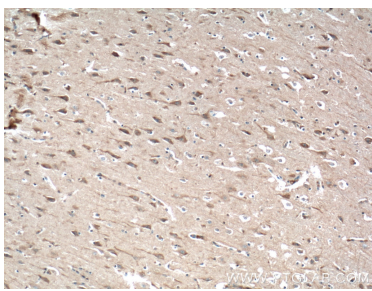
E: proteintech@ptglab.com  
W: ptglab.com

This product is exclusively available under Proteintech Group brand and is not available to purchase from any other manufacturer.

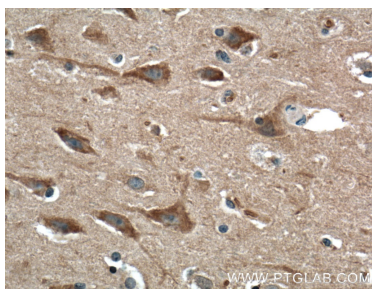
Selected Validation Data



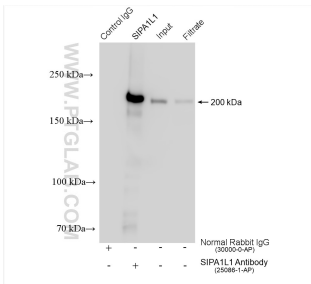
Various lysates were subjected to SDS PAGE followed by western blot with 25086-1-AP (SIPA1L1 antibody) at dilution of 1:3000 incubated at room temperature for 1.5 hours.



Immunohistochemical analysis of paraffin-embedded human brain tissue slide using 25086-1-AP (SIPA1L1 Antibody) at dilution of 1:200 (under 10x lens). Heat mediated antigen retrieval with Tris-EDTA buffer (pH 9.0).



Immunohistochemical analysis of paraffin-embedded human brain tissue slide using 25086-1-AP (SIPA1L1 Antibody) at dilution of 1:200 (under 40x lens). Heat mediated antigen retrieval with Tris-EDTA buffer (pH 9.0).



IP result of anti-SIPA1L1 (IP:25086-1-AP, 4ug; Detection:25086-1-AP 1:3000) with mouse brain tissue lysate 1280 ug.