

For Research Use Only

CLIP-115/CLIP2 Polyclonal antibody

Catalog Number: 25088-1-AP

Featured Product

1 Publications



Basic Information

Catalog Number:

25088-1-AP

Size:

150ul, Concentration: 950 ug/ml by Nanodrop and 487 ug/ml by Bradford method using BSA as the standard;

Source:

Rabbit

Isotype:

IgG

Immunogen Catalog Number:

AG18692

GenBank Accession Number:

BC150332

GeneID (NCBI):

7461

UNIPROT ID:

Q9UDT6

Full Name:

CAP-GLY domain containing linker protein 2

Calculated MW:

1011 aa, 112 kDa

Observed MW:

110-120 kDa

Purification Method:

Antigen affinity purification

Recommended Dilutions:

WB 1:5000-1:50000

IP 0.5-4.0 ug for 1.0-3.0 mg of total protein lysate

IHC 1:400-1:1600

Applications

Tested Applications:

WB, IP, IHC, ELISA

Cited Applications:

IF

Species Specificity:

human, mouse, rat

Cited Species:

mouse

Note-IHC: suggested antigen retrieval with TE buffer pH 9.0; (*) Alternatively, antigen retrieval may be performed with citrate buffer pH 6.0

Positive Controls:

WB: RAW 264.7 cells, A549 cells, rat brain tissue, mouse brain tissue, mouse cerebellum tissue, rat cerebellum tissue

IP: mouse brain tissue,

IHC: mouse brain tissue,

Background Information

CLIP-2/CLIP-115 is a cytoplasmic linker protein (CLIP) that links membranous organelles to microtubules. CLIP-115 is enriched in the axonal growth cone and it enables neuronal polarization by controlling the stabilization of microtubules. Mutation of CLIP-115 has been associated with Williams-Beuren syndrome.

Notable Publications

Author	Pubmed ID	Journal	Application
Sara C Sousa	39265571	Curr Biol	IF

Storage

Storage:

Store at -20°C. Stable for one year after shipment.

Storage Buffer:

PBS with 0.02% sodium azide and 50% glycerol pH 7.3.

Aliquoting is unnecessary for -20°C storage

*** 20ul sizes contain 0.1% BSA

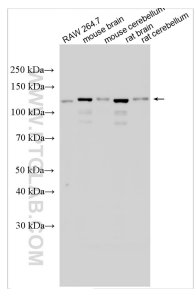
For technical support and original validation data for this product please contact:

T: 1 (888) 4PTGLAB (1-888-478-4522) (toll free in USA), or 1(312) 455-8498 (outside USA)

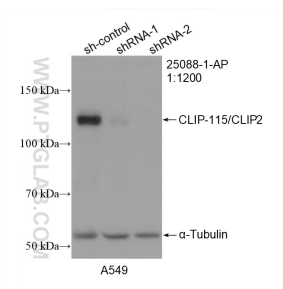
E: proteintech@ptglab.com
W: ptglab.com

This product is exclusively available under Proteintech Group brand and is not available to purchase from any other manufacturer.

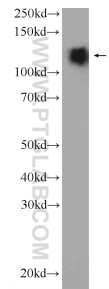
Selected Validation Data



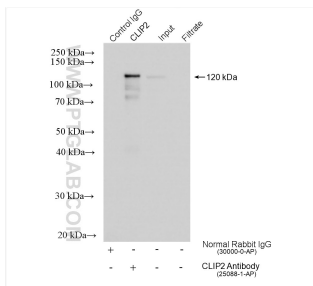
Various lysates were subjected to SDS PAGE followed by western blot with 25088-1-AP (CLIP-115/CLIP2 antibody) at dilution of 1:10000 incubated at room temperature for 1.5 hours.



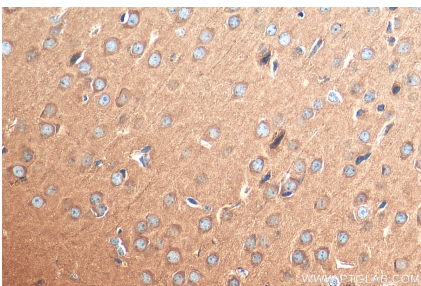
WB result of CLIP-115/CLIP2 antibody (25088-1-AP; 1:1200; incubated at room temperature for 1.5 hours) with sh-Control and sh-CLIP-115/CLIP2 transfected A549 cells.



mouse brain tissue were subjected to SDS PAGE followed by western blot with 25088-1-AP (CLIP-115/CYLN2 antibody at dilution of 1:3000 incubated at room temperature for 1.5 hours.



IP result of anti-CLIP-115/CLIP2 (IP:25088-1-AP, 4ug; Detection:25088-1-AP 1:15000) with mouse brain tissue lysate 1080 ug.



Immunohistochemical analysis of paraffin-embedded mouse brain tissue slide using 25088-1-AP (CLIP-115/CLIP2 antibody) at dilution of 1:800 (under 40x lens). Heat mediated antigen retrieval with Tris-EDTA buffer (pH 9.0).