

For Research Use Only

TPTE2 Polyclonal antibody

Catalog Number: 25120-1-AP



Basic Information

Catalog Number:

25120-1-AP

Size:

150ul , Concentration: 550 ug/ml by Nanodrop and 333 ug/ml by Bradford method using BSA as the standard;

Source:

Rabbit

Isotype:

IgG

Immunogen Catalog Number:

AG19169

GenBank Accession Number:

BC128146

GeneID (NCBI):

93492

UNIPROT ID:

Q6XP53

Full Name:

transmembrane phosphoinositide 3-phosphatase and tensin homolog 2

Calculated MW:

522 aa, 61 kDa

Observed MW:

38-60 kDa

Purification Method:

Antigen affinity purification

Recommended Dilutions:

WB 1:200-1:1000

IHC 1:100-1:400

IF/ICC 1:20-1:200

Applications

Tested Applications:

WB, IHC, IF/ICC, ELISA

Species Specificity:

human

Note-IHC: suggested antigen retrieval with TE buffer pH 9.0; (*) Alternatively, antigen retrieval may be performed with citrate buffer pH 6.0

Positive Controls:

WB : L02 cells,

IHC : human liver cancer tissue,

IF/ICC : L02 cells,

Storage

Storage:

Store at -20°C. Stable for one year after shipment.

Storage Buffer:

PBS with 0.02% sodium azide and 50% glycerol pH 7.3.

Aliquoting is unnecessary for -20°C storage

*** 20ul sizes contain 0.1% BSA

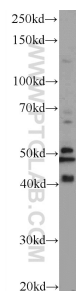
For technical support and original validation data for this product please contact:

T: 1 (888) 4PTGLAB (1-888-478-4522) (toll free in USA), or 1(312) 455-8498 (outside USA)

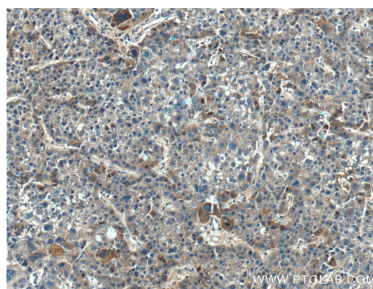
E: proteintech@ptglab.com
W: ptglab.com

This product is exclusively available under Proteintech Group brand and is not available to purchase from any other manufacturer.

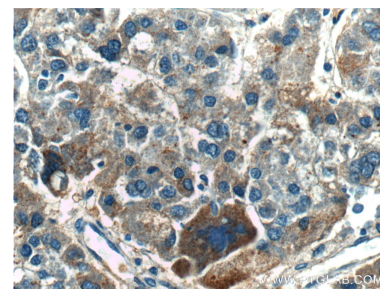
Selected Validation Data



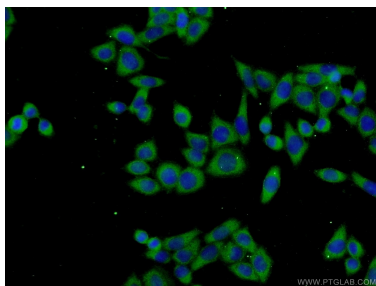
L02 cells were subjected to SDS PAGE followed by western blot with 25120-1-AP (TPTE2 Antibody) at dilution of 1:300 incubated at 4 degree celsius over night.



Immunohistochemical analysis of paraffin-embedded human liver cancer tissue slide using 25120-1-AP (TPTE2 Antibody) at dilution of 1:200 (under 10x lens).



Immunohistochemical analysis of paraffin-embedded human liver cancer tissue slide using 25120-1-AP (TPTE2 Antibody) at dilution of 1:200 (under 40x lens).



Immunofluorescent analysis of L02 cells using 25120-1-AP (TPTE2 antibody) at dilution of 1:50 and Alexa Fluor 488-conjugated Goat Anti-Rabbit IgG(H+L).