

For Research Use Only

# C6orf211/ARMT1 Polyclonal antibody

Catalog Number: 25124-1-AP

Featured Product



## Basic Information

Catalog Number:

25124-1-AP

Size:

150ul, Concentration: 400 ug/ml by Nanodrop and 220 ug/ml by Bradford method using BSA as the standard;

Source:

Rabbit

Isotype:

IgG

Immunogen Catalog Number:

AG19090

GenBank Accession Number:

BC011348

GeneID (NCBI):

79624

UNIPROT ID:

Q9H993

Full Name:

chromosome 6 open reading frame

211

Calculated MW:

441 aa, 51 kDa

Observed MW:

50-51 kDa

Purification Method:

Antigen affinity purification

Recommended Dilutions:

WB 1:500-1:2000

IHC 1:50-1:500

IF/ICC 1:50-1:500

## Applications

Tested Applications:

WB, IHC, IF/ICC, ELISA

Species Specificity:

human

**Note-IHC: suggested antigen retrieval with TE buffer pH 9.0; (\*) Alternatively, antigen retrieval may be performed with citrate buffer pH 6.0**

Positive Controls:

WB : MCF-7 cells, HEK-293 cells, A431 cells, T-47D cells

IHC : human breast cancer tissue, human testis tissue

IF/ICC : T-47D cells,

## Storage

Storage:

Store at -20°C. Stable for one year after shipment.

Storage Buffer:

PBS with 0.02% sodium azide and 50% glycerol pH 7.3.

Aliquoting is unnecessary for -20°C storage

\*\*\* 20ul sizes contain 0.1% BSA

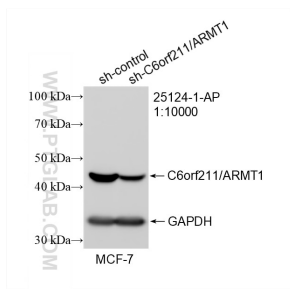
For technical support and original validation data for this product please contact:

T: 1 (888) 4PTGLAB (1-888-478-4522) (toll free in USA), or 1(312) 455-8498 (outside USA)

E: [proteintech@ptglab.com](mailto:proteintech@ptglab.com)  
W: [ptglab.com](http://ptglab.com)

This product is exclusively available under Proteintech Group brand and is not available to purchase from any other manufacturer.

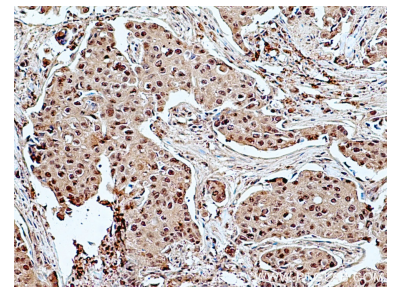
## Selected Validation Data



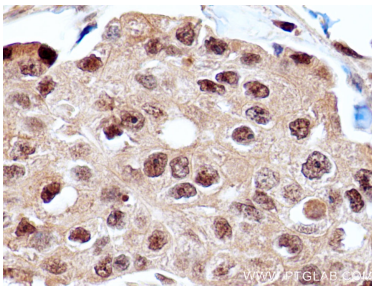
WB result of C6orf211/ARMT1 antibody (25124-1-AP; 1:10000; incubated at room temperature for 1.5 hours) with sh-Control and sh-C6orf211/ARMT1 transfected MCF-7 cells.



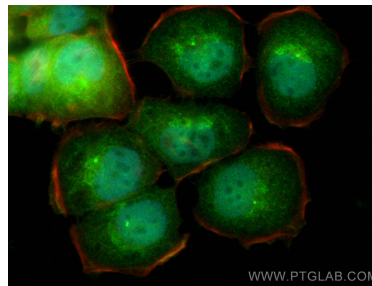
MCF-7 cells were subjected to SDS PAGE followed by western blot with 25124-1-AP (C6orf211 Antibody) at dilution of 1:600 incubated at room temperature for 1.5 hours.



Immunohistochemical analysis of paraffin-embedded human breast cancer tissue slide using 25124-1-AP (C6orf211 antibody) at dilution of 1:200 (under 10x lens). Heat mediated antigen retrieval with Tris-EDTA buffer (pH 9.0).



Immunohistochemical analysis of paraffin-embedded human breast cancer tissue slide using 25124-1-AP (C6orf211 antibody) at dilution of 1:200 (under 40x lens). Heat mediated antigen retrieval with Tris-EDTA buffer (pH 9.0).



Immunofluorescent analysis of (4% PFA) fixed T-47D cells using C6orf211/ARMT1 antibody (25124-1-AP) at dilution of 1:200 and CoraLite@488-Conjugated Goat Anti-Rabbit IgG(H+L) (SA00013-2), CL594-phalloidin (red).