

For Research Use Only

CCDC12 Polyclonal antibody

Catalog Number: 25138-1-AP



Basic Information

Catalog Number: 25138-1-AP	GenBank Accession Number: BC020830	Purification Method: Antigen affinity purification
Size: 150ul , Concentration: 700 µg/ml by Nanodrop and 373 µg/ml by Bradford method using BSA as the standard;	GeneID (NCBI): 151903	Recommended Dilutions: WB 1:500-1:1000 IP 0.5-4.0 ug for IP and 1:500-1:1000 for WB
Source: Rabbit	Full Name: coiled-coil domain containing 12	IHC 1:500-1:2000
Isotype: IgG	Calculated MW: 166 aa, 19 kDa	IF 1:50-1:500
Immunogen Catalog Number: AG18223	Observed MW: 18-25 kDa	

Applications

Tested Applications: IF, IHC, IP, WB, ELISA	Positive Controls: WB : HeLa cells, Raji cells
Species Specificity: human	IP : HeLa cells,
Note-IHC: suggested antigen retrieval with TE buffer pH 9.0; (*) Alternatively, antigen retrieval may be performed with citrate buffer pH 6.0	IHC : human ovary tumor tissue,
	IF : HeLa cells,

Background Information

CCDC12 is a 166aa protein with MW 18-25 kDa (with some modification).

Storage

Storage:
Store at -20°C. Stable for one year after shipment.
Storage Buffer:
PBS with 0.02% sodium azide and 50% glycerol pH 7.3.
Aliquoting is unnecessary for -20°C storage

*** 20ul sizes contain 0.1% BSA

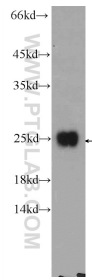
For technical support and original validation data for this product please contact:

T: 1 (888) 4PTGLAB (1-888-478-4522) (toll free in USA), or 1(312) 455-8498 (outside USA)

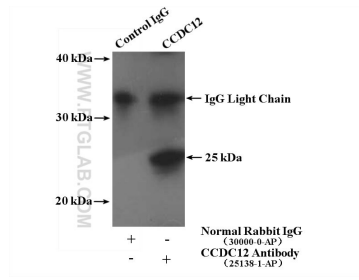
E: proteintech@ptglab.com
W: ptglab.com

This product is exclusively available under Proteintech Group brand and is not available to purchase from any other manufacturer.

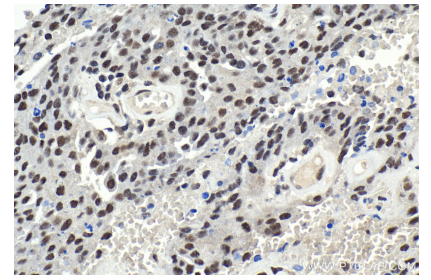
Selected Validation Data



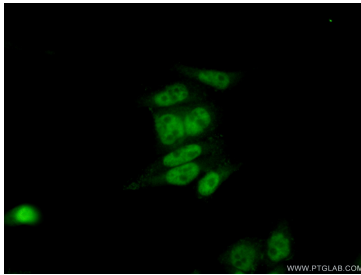
HeLa cells were subjected to SDS PAGE followed by western blot with 25138-1-AP (CCDC12 Antibody) at dilution of 1:600 incubated at room temperature for 1.5 hours.



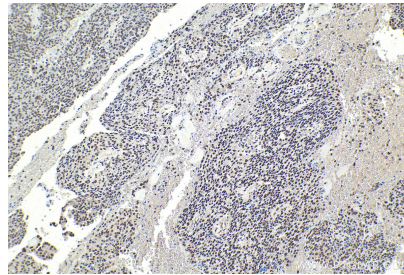
IP Result of anti-CCDC12 (IP:25138-1-AP, 4 μ g; Detection:25138-1-AP 1:600) with HeLa cells lysate 2560 μ g.



Immunohistochemical analysis of paraffin-embedded human ovary tumor tissue slide using 25138-1-AP (CCDC12 antibody) at dilution of 1:1000 (under 40 \times lens). Heat mediated antigen retrieval with Tris-EDTA buffer (pH 9.0).



Immunofluorescent analysis of (10% Formaldehyde) fixed HeLa cells using 25138-1-AP (CCDC12 antibody) at dilution of 1:50 and Alexa Fluor 488-conjugated AffiniPure Goat Anti-Rabbit IgG(H+L).



Immunohistochemical analysis of paraffin-embedded human ovary tumor tissue slide using 25138-1-AP (CCDC12 antibody) at dilution of 1:1000 (under 10 \times lens). Heat mediated antigen retrieval with Tris-EDTA buffer (pH 9.0).