

For Research Use Only

TBX15 Polyclonal antibody

Catalog Number: 25148-1-AP

1 Publications



Basic Information

Catalog Number:

25148-1-AP

Size:

150ul, Concentration: 400 ug/ml by Nanodrop;

Source:

Rabbit

Isotype:

IgG

Immunogen Catalog Number:

AG18423

GenBank Accession Number:

BC122553

GeneID (NCBI):

6913

UNIPROT ID:

Q96SF7

Full Name:

T-box 15

Calculated MW:

602 aa, 66 kDa

Observed MW:

50 kDa

Purification Method:

Antigen affinity purification

Recommended Dilutions:

WB 1:1000-1:8000

Applications

Tested Applications:

WB, ELISA

Cited Applications:

WB

Species Specificity:

human

Cited Species:

human, mouse

Positive Controls:

WB : HeLa cells,

Background Information

TBX15 is a transcription factor from the T-box family and is a highly pleiotropic gene expressed in multiple tissues at different stages of development. It is required for skeletal development and deletions in this gene cause severe skeletal malformation. In addition, TBX15 also plays a role in the differentiation of brown and beige adipocytes (PMID: 28007980). The predicted molecular weight of TBX15 is 66 kDa. With modification, the MW of TBX15 will be migrated to 50 kDa.

Notable Publications

Author	Pubmed ID	Journal	Application
Yuyuan Ge	38327797	iScience	WB

Storage

Storage:

Store at -20°C. Stable for one year after shipment.

Storage Buffer:

PBS with 0.02% sodium azide and 50% glycerol pH 7.3.

Aliquoting is unnecessary for -20°C storage

*** 20ul sizes contain 0.1% BSA

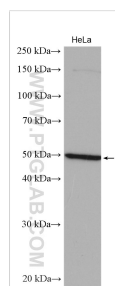
For technical support and original validation data for this product please contact:

T: 1 (888) 4PTGLAB (1-888-478-4522) (toll free in USA), or 1(312) 455-8498 (outside USA)

E: proteintech@ptglab.com
W: ptglab.com

This product is exclusively available under Proteintech Group brand and is not available to purchase from any other manufacturer.

Selected Validation Data



HeLa cells were subjected to SDS PAGE followed by western blot with 25148-1-AP (TBX15 antibody) at dilution of 1:4000 incubated at room temperature for 1.5 hours.