

For Research Use Only

ATG2B Polyclonal antibody

Catalog Number: 25155-1-AP

Featured Product

17 Publications



Basic Information

Catalog Number:

25155-1-AP

Size:

150ul, Concentration: 500 ug/ml by Nanodrop and 253 ug/ml by Bradford method using BSA as the standard;

Source:

Rabbit

Isotype:

IgG

Immunogen Catalog Number:

AG18412

GenBank Accession Number:

BC015016

GeneID (NCBI):

55102

UNIPROT ID:

Q96BY7

Full Name:

ATG2 autophagy related 2 homolog B (S. cerevisiae)

Calculated MW:

2078 aa, 233 kDa

Observed MW:

240-250 kDa

Purification Method:

Antigen affinity purification

Recommended Dilutions:

WB: 1:500-1:1000

IHC: 1:50-1:500

IF/ICC: 1:50-1:500

Applications

Tested Applications:

WB, IHC, IF/ICC, ELISA

Cited Applications:

WB, IF, CoIP

Species Specificity:

human

Cited Species:

human, mouse

Note-IHC: suggested antigen retrieval with TE buffer pH 9.0; (*) Alternatively, antigen retrieval may be performed with citrate buffer pH 6.0

Positive Controls:

WB: HeLa cells,

IHC: human pancreas cancer tissue, human stomach tissue

IF/ICC: HepG2 cells,

Notable Publications

| Author | Pubmed ID | Journal | Application |
|-----------------|-----------|-----------|-------------|
| Jay Xiaojun Tan | 36071159 | Nature | WB |
| Jee-Eun Lee | 34720018 | Autophagy | WB |
| Ying Li | 33124742 | FASEB J | WB |

Storage

Storage:

Store at -20°C. Stable for one year after shipment.

Storage Buffer:

PBS with 0.02% sodium azide and 50% glycerol, pH7.3

Aliquoting is unnecessary for -20°C storage

*** 20ul sizes contain 0.1% BSA

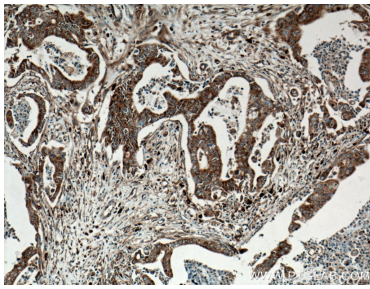
For technical support and original validation data for this product please contact:

T: 1 (888) 4PTGLAB (1-888-478-4522) (toll free in USA), or 1(312) 455-8498 (outside USA)

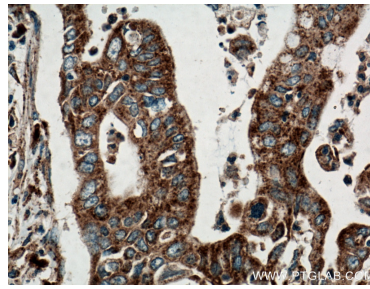
E: proteintech@ptglab.com
W: ptglab.com

This product is exclusively available under Proteintech Group brand and is not available to purchase from any other manufacturer.

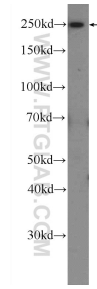
Selected Validation Data



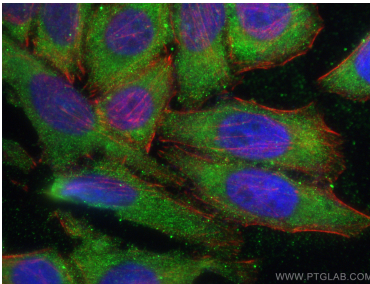
Immunohistochemical analysis of paraffin-embedded human pancreas cancer tissue slide using 25155-1-AP (ATG2B antibody) at dilution of 1:200 (under 10x lens. Heat mediated antigen retrieval with Tris-EDTA buffer (pH 9.0).



Immunohistochemical analysis of paraffin-embedded human pancreas cancer tissue slide using 25155-1-AP (ATG2B antibody) at dilution of 1:200 (under 40x lens. Heat mediated antigen retrieval with Tris-EDTA buffer (pH 9.0).



HeLa cells were subjected to SDS PAGE followed by western blot with 25155-1-AP (ATG2B Antibody) at dilution of 1:600 incubated at room temperature for 1.5 hours.



Immunofluorescent analysis of (-20°C Ethanol) fixed HepG2 cells using ATG2B antibody (25155-1-AP) at dilution of 1:200 and CoraLite®488-Conjugated AffiniPure Goat Anti-Rabbit IgG(H+L), CL594-phalloidin (red).