

For Research Use Only

WDR20 Polyclonal antibody

Catalog Number: 25164-1-AP

2 Publications



Basic Information

Catalog Number:

25164-1-AP

Size:

150ul, Concentration: 900 ug/ml by Nanodrop and 420 ug/ml by Bradford method using BSA as the standard;

Source:

Rabbit

Isotype:

IgG

Immunogen Catalog Number:

AG18353

GenBank Accession Number:

BC030654

GeneID (NCBI):

91833

UNIPROT ID:

Q8TBZ3

Full Name:

WD repeat domain 20

Calculated MW:

569 aa, 63 kDa

Observed MW:

63 kDa

Purification Method:

Antigen affinity purification

Recommended Dilutions:

WB 1:500-1:2000

Applications

Tested Applications:

WB, ELISA

Cited Applications:

WB

Species Specificity:

human, mouse

Cited Species:

human

Positive Controls:

WB : HeLa cells,

Notable Publications

Author	Pubmed ID	Journal	Application
Gaoyuan Wang	32774476	Oncol Lett	WB
Jiayin Sun	30968727	Artif Cells Nanomed Biotechnol	WB

Storage

Storage:

Store at -20°C. Stable for one year after shipment.

Storage Buffer:

PBS with 0.02% sodium azide and 50% glycerol pH 7.3.

Aliquoting is unnecessary for -20°C storage

*** 20ul sizes contain 0.1% BSA

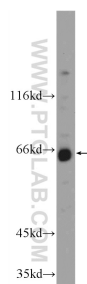
For technical support and original validation data for this product please contact:

T: 1 (888) 4PTGLAB (1-888-478-4522) (toll free in USA), or 1(312) 455-8498 (outside USA)

E: proteintech@ptglab.com
W: ptglab.com

This product is exclusively available under Proteintech Group brand and is not available to purchase from any other manufacturer.

Selected Validation Data



HeLa cells were subjected to SDS PAGE followed by western blot with 25164-1-AP (WDR20 Antibody) at dilution of 1:1000 incubated at room temperature for 1.5 hours.