

For Research Use Only

ALDH1A3 Polyclonal antibody

Catalog Number: 25167-1-AP

Featured Product

16 Publications



Basic Information

Catalog Number:

25167-1-AP

Size:

150ul, Concentration: 800 ug/ml by Nanodrop;

Source:

Rabbit

Isotype:

IgG

Immunogen Catalog Number:

AG18605

GenBank Accession Number:

BC069274

GeneID (NCBI):

220

UNIPROT ID:

P47895

Full Name:

aldehyde dehydrogenase 1 family, member A3

Calculated MW:

512 aa, 56 kDa

Observed MW:

50 kDa

Purification Method:

Antigen affinity purification

Recommended Dilutions:

WB 1:500-1:2000

IHC 1:50-1:500

IF/ICC 1:200-1:800

Applications

Tested Applications:

WB, IHC, IF/ICC, ELISA

Cited Applications:

WB, IHC, IF

Species Specificity:

human, mouse, rat

Cited Species:

human, mouse, goat

Note-IHC: suggested antigen retrieval with TE buffer pH 9.0; (*) Alternatively, antigen retrieval may be performed with citrate buffer pH 6.0

Positive Controls:

WB : HepG2 cells, mouse liver tissue, rat liver tissue

IHC : human liver tissue,

IF/ICC : A549 cells,

Background Information

Aldehyde dehydrogenase 1 family member A3 (ALDH1A3), is an aldehyde dehydrogenase enzyme that uses retinal as a substrate either in a free or a cellular retinol-binding protein form. ALDH1A3 plays a major role in the detoxification of aldehydes generated by alcohol metabolism and lipid peroxidation. ALDH1A3 is calculated to be 56 kDa.

Notable Publications

Author	Pubmed ID	Journal	Application
Changmei Yang	34506903	Free Radic Biol Med	WB
Xingxing Xu	29076503	Cell Res	WB
Shoma Tamori	30559934	Oncotarget	WB

Storage

Storage:

Store at -20°C. Stable for one year after shipment.

Storage Buffer:

PBS with 0.02% sodium azide and 50% glycerol pH 7.3.

Aliquoting is unnecessary for -20°C storage

*** 20ul sizes contain 0.1% BSA

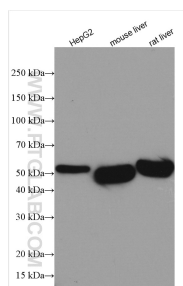
For technical support and original validation data for this product please contact:

T: 1 (888) 4PTGLAB (1-888-478-4522) (toll free in USA), or 1(312) 455-8498 (outside USA)

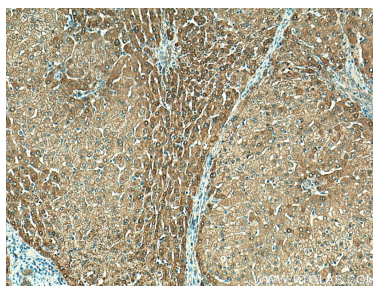
E: proteintech@ptglab.com
W: ptglab.com

This product is exclusively available under Proteintech Group brand and is not available to purchase from any other manufacturer.

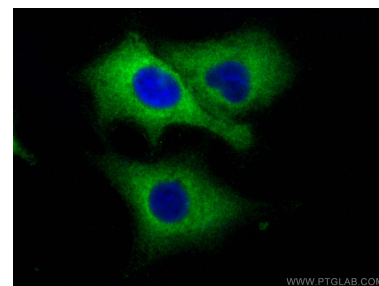
Selected Validation Data



Various lysates were subjected to SDS PAGE followed by western blot with 25167-1-AP (ALDH1A3 antibody) at dilution of 1:1000 incubated at room temperature for 1.5 hours.



Immunohistochemical analysis of paraffin-embedded human liver tissue slide using 25167-1-AP (ALDH1A3 antibody) at dilution of 1:200 (under 10x lens). Heat mediated antigen retrieval with Tris-EDTA buffer (pH 9.0).



Immunofluorescent analysis of (-20°C Methanol) fixed A549 cells using ALDH1A3 antibody (25167-1-AP) at dilution of 1:400 and CoraLite®488-Conjugated AffiniPure Goat Anti-Rabbit IgG(H+L) (SA00013-2).