

For Research Use Only

SAMD9L Polyclonal antibody

Catalog Number: 25173-1-AP

Featured Product

6 Publications



Basic Information

Catalog Number: 25173-1-AP	GenBank Accession Number: BC127118	Purification Method: Antigen affinity purification
Size: 150ul, Concentration: 900 µg/ml by Nanodrop;	GeneID (NCBI): 219285	Recommended Dilutions: WB 1:500-1:3000 IHC 1:50-1:200 IF 1:20-1:200
Source: Rabbit	Full Name: sterile alpha motif domain containing 9-like	
IsoType: IgG	Calculated MW: 1584 aa, 185 kDa	
Immunogen Catalog Number: AG18541	Observed MW: 160-180 kDa	

Applications

Tested Applications:

IF, IHC, WB, ELISA

Cited Applications:

IF, IHC, WB

Species Specificity:

human, mouse, rat

Cited Species:

human

Positive Controls:

WB : rat kidney tissue, COLO 320 cells

IHC : human breast cancer tissue, mouse spleen tissue, human brain tissue, human colon cancer tissue

IF : COLO 320 cells, 3T3-L1 cells

Note-IHC: suggested antigen retrieval with TE buffer pH 9.0; (*) Alternatively, antigen retrieval may be performed with citrate buffer pH 6.0

Background Information

Sterile alpha motif domain-containing protein 9-like (SAMD9L), also named as C7orf6, DRIF2, KIAA2005 and UEF, is a cytoplasmic protein that acts as a tumor suppressor but also plays a key role in cell proliferation and the innate immune response to viral infection. SAMD9L protein is an endosome fusion facilitator which causes myeloid malignancies in mice similar to human diseases with monosomy 7. The SAMD9L protein also appears to play an important role in the brain, particularly the part of the brain that coordinates movement (the cerebellum). SAMD9L has two isoforms with MW 185 kDa and 47 kDa.

Notable Publications

Author	Pubmed ID	Journal	Application
Sushree S Sahoo	34621053	Nat Med	WB
Xiangzhi Meng	29447249	PLoS Pathog	WB
Marc Corral-Juan	35310830	Brain Commun	WB, IF

Storage

Storage:

Store at -20°C. Stable for one year after shipment.

Storage Buffer:

PBS with 0.02% sodium azide and 50% glycerol pH 7.3.

Aliquoting is unnecessary for -20°C storage

*** 20ul sizes contain 0.1% BSA

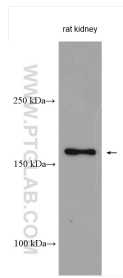
For technical support and original validation data for this product please contact:

T: 1 (888) 4PTGLAB (1-888-478-4522) (toll free in USA), or 1(312) 455-8498 (outside USA)

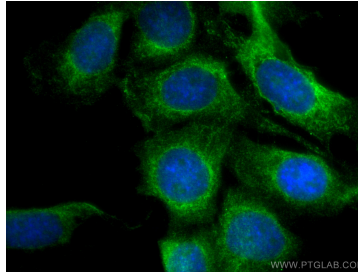
E: proteintech@ptglab.com
W: ptglab.com

This product is exclusively available under Proteintech Group brand and is not available to purchase from any other manufacturer.

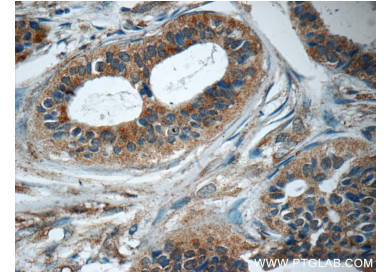
Selected Validation Data



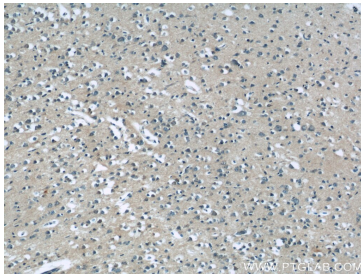
rat kidney tissue were subjected to SDS PAGE followed by western blot with 25173-1-AP (SAM9L antibody) at dilution of 1:1500 incubated at room temperature for 1.5 hours.



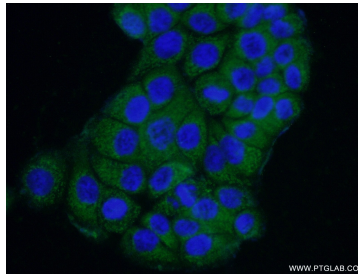
Immunofluorescent analysis of (4% PFA) fixed 3T3-L1 cells using SAM9L antibody (25173-1-AP) at dilution of 1:200 and CoraLite®488-Conjugated AffiniPure Goat Anti-Rabbit IgG(H+L).



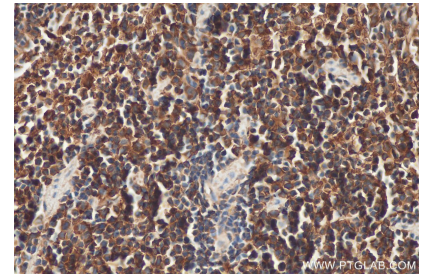
Immunohistochemical analysis of paraffin-embedded human breast cancer tissue slide using 25173-1-AP (SAM9L Antibody) at dilution of 1:50 (under 40x lens).



Immunohistochemical analysis of paraffin-embedded human brain tissue slide using 25173-1-AP (SAM9L Antibody) at dilution of 1:50 (under 10x lens).



Immunofluorescent analysis of (-20°C Ethanol) fixed COLO 320 cells using 25173-1-AP (SAM9L antibody) at dilution of 1:50 and Alexa Fluor 488-conjugated AffiniPure Goat Anti-Rabbit IgG(H+L).



Immunohistochemical analysis of paraffin-embedded mouse spleen tissue slide using 25173-1-AP (SAM9L antibody) at dilution of 1:200 (under 40x lens). Heat mediated antigen retrieval with Tris-EDTA buffer (pH 9.0).