

For Research Use Only

# ROBO1 Polyclonal antibody

Catalog Number: 25181-1-AP

2 Publications



## Basic Information

<b>Catalog Number:</b> 25181-1-AP	<b>GenBank Accession Number:</b> BC112336	<b>Purification Method:</b> Antigen affinity purification
<b>Size:</b> 150ul, Concentration: 400 ug/ml by Nanodrop and 300 ug/ml by Bradford method using BSA as the standard;	<b>GeneID (NCBI):</b> 6091	<b>Recommended Dilutions:</b> WB: 1:1000-1:4000
<b>Source:</b> Rabbit	<b>UNIPROT ID:</b> Q9Y6N7	<b>IHC:</b> 1:50-1:500
<b>Isotype:</b> IgG	<b>Full Name:</b> roundabout, axon guidance receptor, homolog 1 (Drosophila)	<b>IF-P:</b> 1:50-1:500
<b>Immunogen Catalog Number:</b> AG16461	<b>Calculated MW:</b> 1651 aa, 181 kDa	<b>IF/ICC:</b> 1:50-1:500
	<b>Observed MW:</b> 200-250 kDa	

## Applications

<b>Tested Applications:</b> WB, IHC, IF/ICC, IF-P, ELISA	<b>Positive Controls:</b> WB : HeLa cells, HepG2 cells, Y79 cells
<b>Cited Applications:</b> WB, IHC, IF	<b>IHC :</b> human brain tissue, mouse brain tissue
<b>Species Specificity:</b> human, mouse	<b>IF-P :</b> mouse brain tissue,
<b>Cited Species:</b> human, mouse	<b>IF/ICC :</b> HeLa cells,
<b>Note-IHC: suggested antigen retrieval with TE buffer pH 9.0; (*) Alternatively, antigen retrieval may be performed with citrate buffer pH 6.0</b>	

## Background Information

ROBO1, also named as DUTT1, belongs to the immunoglobulin superfamily and ROBO family. It is a receptor for SLIT1 and SLIT2 which are thought to act as molecular guidance cue in cellular migration, including axonal navigation at the ventral midline of the neural tube and projection of axons to different regions during neuronal development. In axon growth cones, the silencing of the attractive effect of NTN1 by SLIT2 may require the formation of a ROBO1-DCC complex. It may be required for lung development.

## Notable Publications

Author	Pubmed ID	Journal	Application
Wenxiu Dai	40117292	Cell Rep	WB
Tetsuya Nakatsura	40076777	Int J Mol Sci	IHC,IF

## Storage

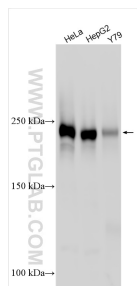
**Storage:**  
Store at -20°C. Stable for one year after shipment.  
**Storage Buffer:**  
PBS with 0.02% sodium azide and 50% glycerol, pH7.3  
Aliquoting is unnecessary for -20°C storage

\*\*\* 20ul sizes contain 0.1% BSA

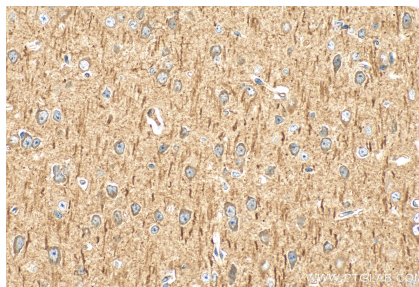
For technical support and original validation data for this product please contact:  
T: 1 (888) 4PTGLAB (1-888-478-4522) (toll free in USA), or 1(312) 455-8498 (outside USA)  
E: proteintech@ptglab.com  
W: ptglab.com

This product is exclusively available under Proteintech Group brand and is not available to purchase from any other manufacturer.

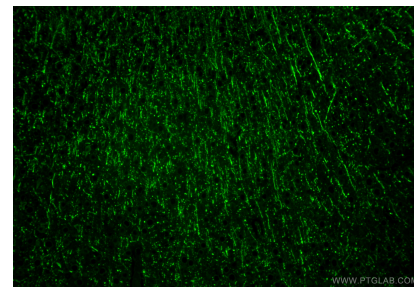
## Selected Validation Data



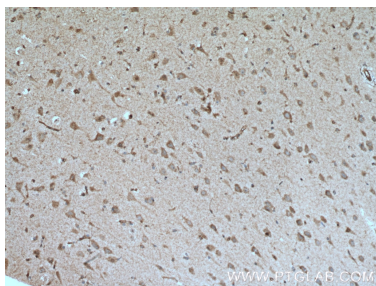
Various lysates were subjected to SDS PAGE followed by western blot with 25181-1-AP (ROBO1 antibody) at dilution of 1:2000 incubated at room temperature for 1.5 hours.



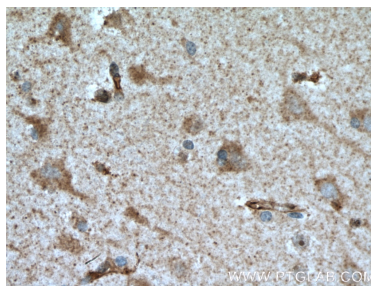
Immunohistochemical analysis of paraffin-embedded mouse brain tissue slide using 25181-1-AP (ROBO1 antibody) at dilution of 1:200 (under 40x lens). Heat mediated antigen retrieval with Tris-EDTA buffer (pH 9.0).



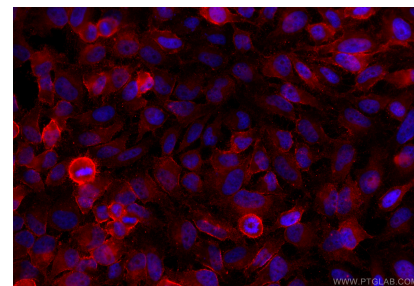
Immunofluorescent analysis of (4% PFA) fixed paraffin-embedded mouse brain tissue using ROBO1 antibody (25181-1-AP) at dilution of 1:200 and CoraLite®488-Conjugated Goat Anti-Rabbit IgG(H+L) (SA00013-2). Heat mediated antigen retrieval with Tris-EDTA buffer (pH 9.0).



Immunohistochemical analysis of paraffin-embedded human brain tissue slide using 25181-1-AP (ROBO1 Antibody) at dilution of 1:50 (under 10x lens). Heat mediated antigen retrieval with Tris-EDTA buffer (pH 9.0).



Immunohistochemical analysis of paraffin-embedded human brain tissue slide using 25181-1-AP (ROBO1 Antibody) at dilution of 1:50 (under 40x lens). Heat mediated antigen retrieval with Tris-EDTA buffer (pH 9.0).



Immunofluorescent analysis of (4% PFA) fixed HeLa cells using ROBO1 antibody (25181-1-AP) at dilution of 1:200 and CoraLite®594-Conjugated Goat Anti-Rabbit IgG(H+L) (SA00013-4).