

For Research Use Only

# RSL24D1 Polyclonal antibody

Catalog Number: 25190-1-AP

4 Publications



## Basic Information

### Catalog Number:

25190-1-AP

### Size:

150ul, Concentration: 500 ug/ml by Nanodrop and 273 ug/ml by Bradford method using BSA as the standard;

### Source:

Rabbit

### Isotype:

IgG

### Immunogen Catalog Number:

AG18195

### GenBank Accession Number:

BC008409

### GeneID (NCBI):

51187

### UNIPROT ID:

Q9UHA3

### Full Name:

ribosomal L24 domain containing 1

### Calculated MW:

163 aa, 20 kDa

### Observed MW:

20 kDa

### Purification Method:

Antigen affinity purification

### Recommended Dilutions:

WB 1:500-1:1000

IF/ICC 1:50-1:500

## Applications

### Tested Applications:

WB, IF/ICC, ELISA

### Cited Applications:

WB, IF

### Species Specificity:

human

### Cited Species:

human

### Positive Controls:

WB : HepG2 cells, HL-60 cells, PC-3 cells

IF/ICC : HepG2 cells,

## Notable Publications

Author	Pubmed ID	Journal	Application
Mason A McCool	36323459	RNA	WB
Chunyang Ni	35354024	Cell Rep	WB,IF
Vidhya Krishnamoorthy	38554706	Cell	WB

## Storage

### Storage:

Store at -20°C. Stable for one year after shipment.

### Storage Buffer:

PBS with 0.02% sodium azide and 50% glycerol pH 7.3.

Aliquoting is unnecessary for -20°C storage

\*\*\* 20ul sizes contain 0.1% BSA

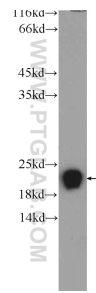
For technical support and original validation data for this product please contact:

T: 1 (888) 4PTGLAB (1-888-478-4522) (toll free in USA), or 1(312) 455-8498 (outside USA)

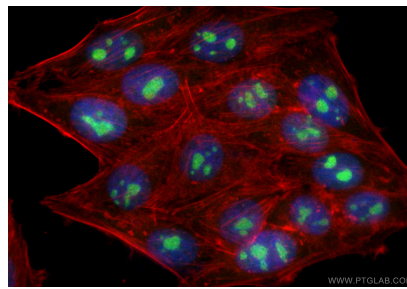
E: [proteintech@ptglab.com](mailto:proteintech@ptglab.com)  
W: [ptglab.com](http://ptglab.com)

This product is exclusively available under Proteintech Group brand and is not available to purchase from any other manufacturer.

## Selected Validation Data



HepG2 cells were subjected to SDS PAGE followed by western blot with 25190-1-AP (RSL24D1 Antibody) at dilution of 1:600 incubated at room temperature for 1.5 hours.



Immunofluorescent analysis of (4% PFA) fixed HepG2 cells using RSL24D1 antibody (25190-1-AP) at dilution of 1:200 and CoraLite® 488-Conjugated Goat Anti-Rabbit IgG(H+L) (SA00013-2), CL594-phalloidin (red).