

For Research Use Only

ZCCHC6 Polyclonal antibody

Catalog Number: 25196-1-AP

Featured Product

14 Publications



Basic Information

Catalog Number:

25196-1-AP

Size:

150ul, Concentration: 650 ug/ml by Nanodrop and 367 ug/ml by Bradford method using BSA as the standard;

Source:

Rabbit

Isotype:

IgG

Immunogen Catalog Number:

AG18240

GenBank Accession Number:

BC032456

GeneID (NCBI):

79670

UNIPROT ID:

Q5VYS8

Full Name:

zinc finger, CCHC domain containing 6

Calculated MW:

1495 aa, 171 kDa

Observed MW:

171 kDa

Purification Method:

Antigen affinity purification

Recommended Dilutions:

WB 1:500-1:2000

IP 0.5-4.0 ug for 1.0-3.0 mg of total protein lysate

Applications

Tested Applications:

WB, IP, ELISA

Cited Applications:

WB, IF, IP, ColP

Species Specificity:

human, mouse, rat

Cited Species:

human, mouse

Positive Controls:

WB : PC-3 cells, HEK-293T cells, mouse brain tissue

IP : HeLa cells,

Background Information

ZCCHC6 also named as KIAA1711, HS2 or TUT7 is a 1495 amino acid protein, which contains three CCHC-type zinc fingers and two PAP-associated domains. A member of the DNA polymerase type-B-like family, ZCCHC6 as a uridylyltransferase that mediates RNA uridylation.

Notable Publications

Author	Pubmed ID	Journal	Application
Patrick E Lackey	27609902	RNA	
Acong Yang	36071058	Nat Commun	WB, IP
Hagai Marmor-Kollet	33217318	Mol Cell	IF

Storage

Storage:

Store at -20°C. Stable for one year after shipment.

Storage Buffer:

PBS with 0.02% sodium azide and 50% glycerol pH 7.3.

Aliquoting is unnecessary for -20°C storage

*** 20ul sizes contain 0.1% BSA

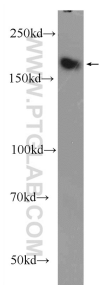
For technical support and original validation data for this product please contact:

T: 1 (888) 4PTGLAB (1-888-478-4522) (toll free in USA), or 1(312) 455-8498 (outside USA)

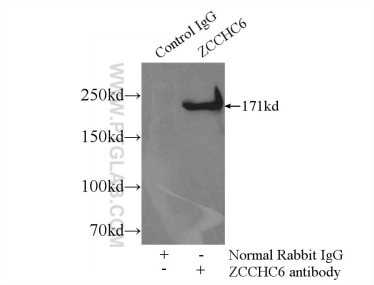
E: proteintech@ptglab.com
W: ptglab.com

This product is exclusively available under Proteintech Group brand and is not available to purchase from any other manufacturer.

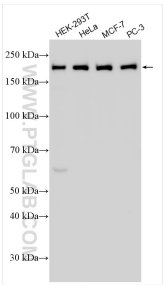
Selected Validation Data



PC-3 cells were subjected to SDS PAGE followed by western blot with 25196-1-AP (ZCCHC6 Antibody) at dilution of 1:1000 incubated at room temperature for 1.5 hours.



IP result of anti-ZCCHC6 (IP:25196-1-AP, 4ug; Detection:25196-1-AP 1:1000) with HeLa cells lysate 1800ug.



Various lysates were subjected to SDS PAGE followed by western blot with 25196-1-AP (ZCCHC6 antibody) at dilution of 1:3000 incubated at room temperature for 1.5 hours.