

For Research Use Only

USE1 Polyclonal antibody

Catalog Number: 25218-1-AP

Featured Product

2 Publications



Basic Information

Catalog Number:

25218-1-AP

Size:

150ul , Concentration: 700 ug/ml by Nanodrop and 387 ug/ml by Bradford method using BSA as the standard;

Source:

Rabbit

Isotype:

IgG

Immunogen Catalog Number:

AG18587

GenBank Accession Number:

BC008455

GeneID (NCBI):

55850

UNIPROT ID:

Q9NZ43

Full Name:

unconventional SNARE in the ER 1 homolog (S. cerevisiae)

Calculated MW:

259 aa, 29 kDa

Observed MW:

29 kDa

Purification Method:

Antigen affinity purification

Recommended Dilutions:

WB 1:200-1:1000

IHC 1:100-1:400

Applications

Tested Applications:

WB, IHC, ELISA

Cited Applications:

WB

Species Specificity:

human

Cited Species:

human

Note-IHC: suggested antigen retrieval with TE buffer pH 9.0; (*) Alternatively, antigen retrieval may be performed with citrate buffer pH 6.0

Positive Controls:

WB : HEK-293 cells, Jurkat cells

IHC : human small intestine tissue,

Background Information

USE1(Vesicle transport protein USE1) is also named as USE1L, p31 and belongs to the USE1 family. It may be an essential molecule involved in the maintenance of ER morphology (and its deficiency leads to ER stress-induced apoptosis). USE1 also participates in the degradative function of lysosomes. This protein has 3 isoforms produced by alternative splicing.

Notable Publications

Author	Pubmed ID	Journal	Application
Javier Coy-Vergara	31182645	J Cell Sci	WB
Yaqing Liu	36480520	PLoS Pathog	WB

Storage

Storage:

Store at -20°C. Stable for one year after shipment.

Storage Buffer:

PBS with 0.02% sodium azide and 50% glycerol pH 7.3.

Aliquoting is unnecessary for -20°C storage

*** 20ul sizes contain 0.1% BSA

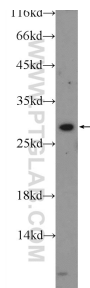
For technical support and original validation data for this product please contact:

T: 1 (888) 4PTGLAB (1-888-478-4522) (toll free in USA), or 1(312) 455-8498 (outside USA)

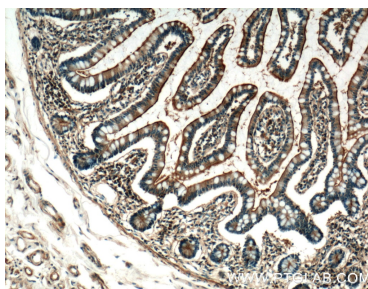
E: proteintech@ptglab.com
W: ptglab.com

This product is exclusively available under Proteintech Group brand and is not available to purchase from any other manufacturer.

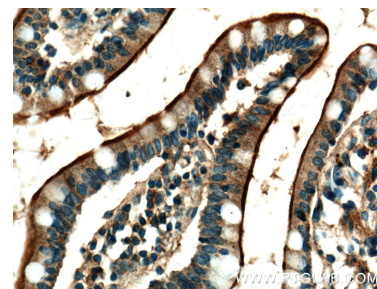
Selected Validation Data



HEK-293 cells were subjected to SDS PAGE followed by western blot with 25218-1-AP (USE1 Antibody) at dilution of 1:300 incubated at room temperature for 1.5 hours.



Immunohistochemical analysis of paraffin-embedded human small intestine tissue slide using 25218-1-AP (USE1 Antibody) at dilution of 1:200 (under 10x lens).



Immunohistochemical analysis of paraffin-embedded human small intestine tissue slide using 25218-1-AP (USE1 Antibody) at dilution of 1:200 (under 40x lens).