

For Research Use Only

SLMAP Polyclonal antibody

Catalog Number: 25220-1-AP

Featured Product

1 Publications



Basic Information

Catalog Number: 25220-1-AP	GenBank Accession Number: BC115701	Purification Method: Antigen affinity purification
Size: 150ul, Concentration: 700 µg/ml by Nanodrop and 340 µg/ml by Bradford method using BSA as the standard;	GeneID (NCBI): 7871	Recommended Dilutions: WB 1:500-1:1000
Source: Rabbit	Full Name: sarcolemma associated protein	
Isotype: IgG	Calculated MW: 828 aa, 95 kDa	
Immunogen Catalog Number: AG18162	Observed MW: 35 kDa, 45 kDa, 63-66 kDa, 83-91 kDa	

Applications

Tested Applications: WB, ELISA	Positive Controls: WB: mouse heart tissue, A431 cells, mouse skeletal muscle tissue
Cited Applications: WB	
Species Specificity: human, mouse	
Cited Species: human	

Background Information

Sarcolemmal membrane associated protein (SLMAP) is a tail-anchored membrane protein involved in the docking and membrane fusion process via protein-protein interactions. Deregulation of SLMAP expression plays an important role in type 2 diabetes, and changes in SLMAP expression are linked to hyperglycemia and diabetes. SLMAPs are components of cardiac membranes and have been identified as a novel regulator of cardiac function. There are several isoforms of SLMAPs with varying molecular size (35, 45, 63, and 83-91 kDa) as a result of alternative splicing. The short 35-kDa isoform is predominantly expressed in cardiac and slow-twitch skeletal muscle, while the 83- to 91-kDa isoform is ubiquitous. This antibody recognizes all of these isoforms in mouse heart lysate. (21785580, 22180652)

Notable Publications

Author	Pubmed ID	Journal	Application
Masayoshi Hasegawa	35916358	Thorac Cancer	WB

Storage

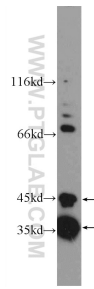
Storage:
Store at -20°C. Stable for one year after shipment.
Storage Buffer:
PBS with 0.02% sodium azide and 50% glycerol pH 7.3.
Aliquoting is unnecessary for -20°C storage

*** 20ul sizes contain 0.1% BSA

For technical support and original validation data for this product please contact:
T: 1 (888) 4PTGLAB (1-888-478-4522) (toll free in USA), or 1(312) 455-8498 (outside USA)
E: proteintech@ptglab.com
W: ptglab.com

This product is exclusively available under Proteintech Group brand and is not available to purchase from any other manufacturer.

Selected Validation Data



mouse heart tissue were subjected to SDS PAGE followed by western blot with 25220-1-AP (SLMAP Antibody) at dilution of 1:600 incubated at room temperature for 1.5 hours.