

For Research Use Only

KLHL28 Polyclonal antibody

Catalog Number: 25224-1-AP



Basic Information

Catalog Number: 25224-1-AP	GenBank Accession Number: BC121009	Purification Method: Antigen affinity purification
Size: 150ul , Concentration: 650 ug/ml by Nanodrop and 387 ug/ml by Bradford method using BSA as the standard;	GeneID (NCBI): 54813	Recommended Dilutions: WB 1:200-1:1000 IHC 1:50-1:500
Source: Rabbit	UNIPROT ID: Q9NXS3	
Isotype: IgG	Full Name: kelch-like 28 (Drosophila)	
Immunogen Catalog Number: AG18665	Calculated MW: 571 aa, 64 kDa	
	Observed MW: 64 kDa	

Applications

Tested Applications: WB, IHC, ELISA	Positive Controls:
Species Specificity: human, mouse	WB : Jurkat cells, mouse brain tissue
Note-IHC: suggested antigen retrieval with TE buffer pH 9.0; (*) Alternatively, antigen retrieval may be performed with citrate buffer pH 6.0	IHC : human liver tissue, human colon tissue

Background Information

KLHL28 also named as BTBD5 or Kelch like protein 28 is a 571 amino acid protein, which contains one BTB domain and six kelch repeats. KLHL28 localizes in the cytoplasm and belongs to BTB/kelch-associated proteins family. KLHL28 may play a role in organizing the actin cytoskeleton of the brain cells. KLHL28 is expressed as two isoforms produced by alternative splicing.

Storage

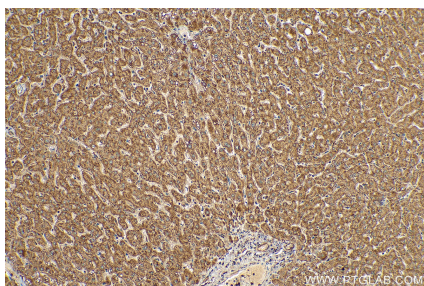
Storage:
Store at -20°C. Stable for one year after shipment.
Storage Buffer:
PBS with 0.02% sodium azide and 50% glycerol pH 7.3.
Aliquoting is unnecessary for -20°C storage

*** 20ul sizes contain 0.1% BSA

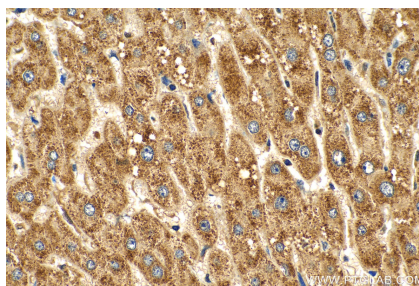
For technical support and original validation data for this product please contact:
T: 1 (888) 4PTGLAB (1-888-478-4522) (toll free in USA), or 1(312) 455-8498 (outside USA)
E: proteintech@ptglab.com
W: ptglab.com

This product is exclusively available under Proteintech Group brand and is not available to purchase from any other manufacturer.

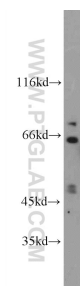
Selected Validation Data



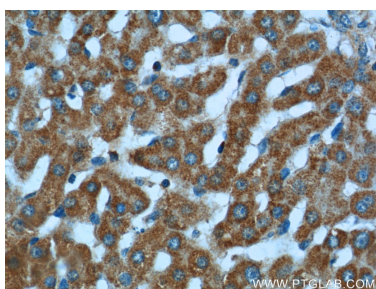
Immunohistochemical analysis of paraffin-embedded human liver tissue slide using 25224-1-AP (KLHL28 antibody) at dilution of 1:200 (under 10x lens). Heat mediated antigen retrieval with Tris-EDTA buffer (pH 9.0).



Immunohistochemical analysis of paraffin-embedded human liver tissue slide using 25224-1-AP (KLHL28 antibody) at dilution of 1:200 (under 40x lens). Heat mediated antigen retrieval with Tris-EDTA buffer (pH 9.0).



Jurkat cells were subjected to SDS PAGE followed by western blot with 25224-1-AP (KLHL28 Antibody) at dilution of 1:300 incubated at room temperature for 1.5 hours.



Immunohistochemical analysis of paraffin-embedded human liver tissue slide using 25224-1-AP (KLHL28 Antibody) at dilution of 1:50 (under 40x lens).