

For Research Use Only

# PHLPPL Polyclonal antibody

Catalog Number: 25244-1-AP

Featured Product

15 Publications



## Basic Information

<b>Catalog Number:</b> 25244-1-AP	<b>GenBank Accession Number:</b> BC129927	<b>Purification Method:</b> Antigen affinity purification
<b>Size:</b> 150ul, Concentration: 450 µg/ml by Nanodrop and 320 µg/ml by Bradford method using BSA as the standard;	<b>GeneID (NCBI):</b> 23035	<b>Recommended Dilutions:</b> WB 1:500-1:2000 IP 0.5-4.0 ug for 1.0-3.0 mg of total protein lysate IHC 1:20-1:200 IF 1:10-1:100
<b>Source:</b> Rabbit	<b>Full Name:</b> PH domain and leucine rich repeat protein phosphatase-like	
<b>Isotype:</b> IgG	<b>Calculated MW:</b> 1323 aa, 147 kDa	
<b>Immunogen Catalog Number:</b> AG19000	<b>Observed MW:</b> 147 kDa	

## Applications

<b>Tested Applications:</b> IF, IHC, IP, WB, ELISA	<b>Positive Controls:</b> WB : HeLa cells, NIH/3T3 cells IP : HeLa cells, IHC : human colon cancer tissue, human colon tissue IF : HeLa cells,
<b>Cited Applications:</b> IF, IHC, WB	
<b>Species Specificity:</b> human, mouse, rat	
<b>Cited Species:</b> human, rat, mouse, zebrafish	
<b>Note-IHC: suggested antigen retrieval with TE buffer pH 9.0; (*) Alternatively, antigen retrieval may be performed with citrate buffer pH 6.0</b>	

## Background Information

PHLPPL also named as KIAA0931 or PHLPP2 is a 1323 amino acid protein, which contains 22 LRR repeats, 1 PH domain and 1 PP2C-like domain. Localized to both the nucleus and the cytoplasm, PHLPPL uses manganese as a cofactor and mediates the dephosphorylation of Akt1, thereby playing a role in cell survival and apoptotic regulation. Multiple isoforms of PHLPPL exist due to alternative splicing events.

## Notable Publications

Author	Pubmed ID	Journal	Application
Hongmei Wang	31571378	Thorac Cancer	IHC
Zhao Zhou	36217445	J Hepatocell Carcinoma	WB
Xiaosong Wei	31769229	Cancer Med	WB

## Storage

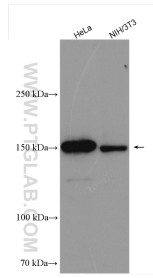
**Storage:**  
Store at -20°C. Stable for one year after shipment.  
**Storage Buffer:**  
PBS with 0.02% sodium azide and 50% glycerol pH 7.3.  
Aliquoting is unnecessary for -20°C storage

\*\*\* 20ul sizes contain 0.1% BSA

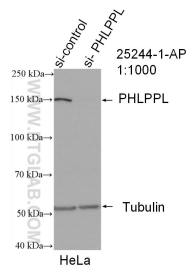
For technical support and original validation data for this product please contact:  
T: 1 (888) 4PTGLAB (1-888-478-4522) (toll free in USA), or 1(312) 455-8498 (outside USA)  
E: proteintech@ptglab.com  
W: ptglab.com

This product is exclusively available under Proteintech Group brand and is not available to purchase from any other manufacturer.

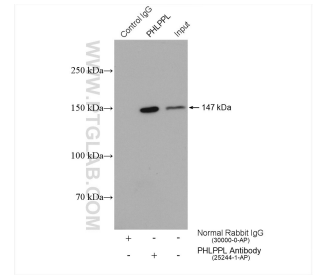
## Selected Validation Data



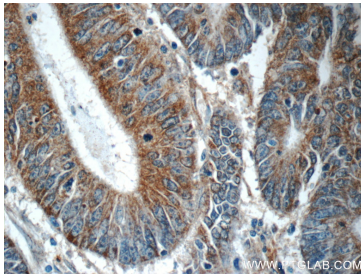
Various lysates were subjected to SDS PAGE followed by western blot with 25244-1-AP (PHLPLP antibody) at dilution of 1:1000 incubated at room temperature for 1.5 hours.



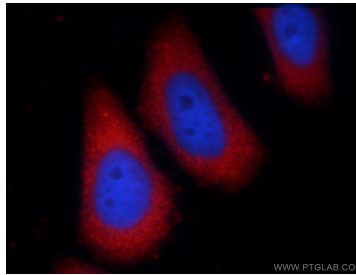
WB result of PHLPLP antibody (25244-1-AP; 1:1000; incubated at room temperature for 1.5 hours) with sh-Control and sh-PHLPLP transfected HeLa cells.



IP result of anti-PHLPLP (IP:25244-1-AP, 4ug; Detection:25244-1-AP 1:500) with HeLa cells lysate 1880 ug.



Immunohistochemical analysis of paraffin-embedded human colon cancer tissue slide using 25244-1-AP (PHLPLP Antibody) at dilution of 1:50 (under 40x lens).



Immunofluorescent analysis of HeLa cells using 25244-1-AP (PHLPLP antibody) at dilution of 1:25 and Rhodamine-Goat anti-Rabbit IgG.