

For Research Use Only

C6orf130 Polyclonal antibody

Catalog Number: 25249-1-AP **1 Publications**



Basic Information

Catalog Number: 25249-1-AP	GenBank Accession Number: BC011709	Purification Method: Antigen affinity purification
Size: 150ul , Concentration: 650 µg/ml by Nanodrop;	GeneID (NCBI): 221443	Recommended Dilutions: WB 1:200-1:1000 IF 1:50-1:500
Source: Rabbit	Full Name: chromosome 6 open reading frame 130	
Isotype: IgG	Calculated MW: 152 aa, 17 kDa	
Immunogen Catalog Number: AG19382	Observed MW: 17 kDa	

Applications

Tested Applications: IF, WB, ELISA	Positive Controls: WB : PC-3 cells, IF : PC-3 cells,
Cited Applications: WB	
Species Specificity: human	
Cited Species: human	

Background Information

The function of C6orf130 remains largely unknown. Catalog#25249-AP is a rabbit polyclonal antibody raised against the full-length of human C6orf130. The MW of this protein is 17 kDa, and this antibody specially recognises the 17 kDa protein.

Notable Publications

Author	Pubmed ID	Journal	Application
Joséphine Groslambert	37676774	Cell Rep	WB

Storage

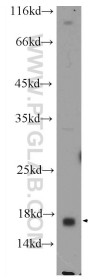
Storage:
Store at -20°C. Stable for one year after shipment.
Storage Buffer:
PBS with 0.02% sodium azide and 50% glycerol pH 7.3.
Aliquoting is unnecessary for -20°C storage

*** 20ul sizes contain 0.1% BSA

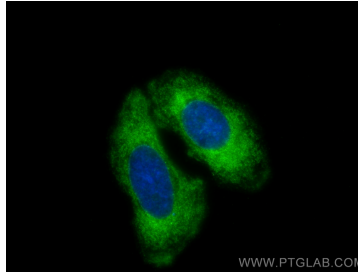
For technical support and original validation data for this product please contact:
T: 1 (888) 4PTGLAB (1-888-478-4522) (toll free in USA), or 1(312) 455-8498 (outside USA)
E: proteintech@ptglab.com
W: ptglab.com

This product is exclusively available under Proteintech Group brand and is not available to purchase from any other manufacturer.

Selected Validation Data



PC-3 cells were subjected to SDS PAGE followed by western blot with 25249-1-AP (C6orf130 Antibody) at dilution of 1:300 incubated at room temperature for 1.5 hours.



Immunofluorescent analysis of (-20°C Methanol) fixed PC-3 cells using C6orf130 antibody (25249-1-AP) at dilution of 1:200 and CoraLite®488-Conjugated AffiniPure Goat Anti-Rabbit IgG(H+L).