

For Research Use Only

CHL1 Polyclonal antibody

Catalog Number: 25250-1-AP

Featured Product

3 Publications



Basic Information

Catalog Number:

25250-1-AP

Size:

150ul, Concentration: 450 ug/ml by Nanodrop and 320 ug/ml by Bradford method using BSA as the standard;

Source:

Rabbit

Isotype:

IgG

Immunogen Catalog Number:

AG19263

GenBank Accession Number:

BC104918

GeneID (NCBI):

10752

UNIPROT ID:

O00533

Full Name:

cell adhesion molecule with homology to L1CAM (close homolog of L1)

Calculated MW:

1208 aa, 135 kDa

Observed MW:

135 kDa

Purification Method:

Antigen affinity purification

Recommended Dilutions:

WB 1:500-1:1000

Applications

Tested Applications:

WB, ELISA

Cited Applications:

WB

Species Specificity:

human, mouse, monkey

Cited Species:

human, mouse

Positive Controls:

WB : mouse brain tissue, COS-7 cells

Notable Publications

Author	Pubmed ID	Journal	Application
Xiangdao Cai	32863924	Oncol Lett	WB
Ming Bao	38476898	Exp Ther Med	WB
Sabrina Simoes	33239387	Sci Transl Med	WB

Storage

Storage:

Store at -20°C. Stable for one year after shipment.

Storage Buffer:

PBS with 0.02% sodium azide and 50% glycerol pH 7.3.

Aliquoting is unnecessary for -20°C storage

*** 20ul sizes contain 0.1% BSA

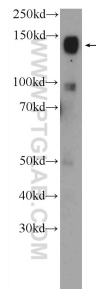
For technical support and original validation data for this product please contact:

T: 1 (888) 4PTGLAB (1-888-478-4522) (toll free in USA), or 1(312) 455-8498 (outside USA)

E: proteintech@ptglab.com
W: ptglab.com

This product is exclusively available under Proteintech Group brand and is not available to purchase from any other manufacturer.

Selected Validation Data



mouse brain tissue were subjected to SDS PAGE followed by western blot with 25250-1-AP (CHL1 Antibody) at dilution of 1:600 incubated at room temperature for 1.5 hours.