

For Research Use Only

TBC1D24 Polyclonal antibody

Catalog Number: 25254-1-AP

2 Publications



Basic Information

Catalog Number:

25254-1-AP

Size:

150ul, Concentration: 900 ug/ml by Nanodrop and 433 ug/ml by Bradford method using BSA as the standard;

Source:

Rabbit

Isotype:

IgG

Immunogen Catalog Number:

AG19380

GenBank Accession Number:

BC127015

GeneID (NCBI):

57465

UNIPROT ID:

Q9ULP9

Full Name:

TBC1 domain family, member 24

Calculated MW:

559 aa, 63 kDa

Observed MW:

60-63 kDa

Purification Method:

Antigen affinity purification

Recommended Dilutions:

WB 1:500-1:1000

IHC 1:50-1:500

Applications

Tested Applications:

WB, IHC, ELISA

Cited Applications:

WB, IHC

Species Specificity:

human

Cited Species:

human, mouse

Note-IHC: suggested antigen retrieval with TE buffer pH 9.0; (*) Alternatively, antigen retrieval may be performed with citrate buffer pH 6.0

Positive Controls:

WB : HEK-293 cells, HeLa cells

IHC : human stomach tissue, human kidney tissue

Notable Publications

Author	Pubmed ID	Journal	Application
Enrico Castroflorio	33340069	Cell Mol Life Sci	WB
Takao Morimune	33886577	PLoS One	IHC, WB

Storage

Storage:

Store at -20°C. Stable for one year after shipment.

Storage Buffer:

PBS with 0.02% sodium azide and 50% glycerol pH 7.3.

Aliquoting is unnecessary for -20°C storage

*** 20ul sizes contain 0.1% BSA

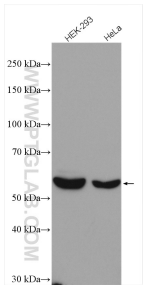
For technical support and original validation data for this product please contact:

T: 1 (888) 4PTGLAB (1-888-478-4522) (toll free in USA), or 1(312) 455-8498 (outside USA)

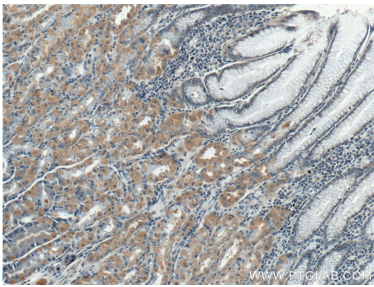
E: proteintech@ptglab.com
W: ptglab.com

This product is exclusively available under Proteintech Group brand and is not available to purchase from any other manufacturer.

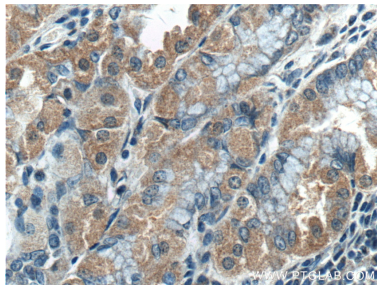
Selected Validation Data



Various lysates were subjected to SDS PAGE followed by western blot with 25254-1-AP (TBC1D24 antibody) at dilution of 1:800 incubated at room temperature for 1.5 hours.



Immunohistochemical analysis of paraffin-embedded human stomach tissue slide using 25254-1-AP (TBC1D24 Antibody) at dilution of 1:200 (under 10x lens).



Immunohistochemical analysis of paraffin-embedded human stomach tissue slide using 25254-1-AP (TBC1D24 Antibody) at dilution of 1:200 (under 40x lens).