

For Research Use Only

# Nesprin 2 Polyclonal antibody

Catalog Number: 25265-1-AP



## Basic Information

<b>Catalog Number:</b> 25265-1-AP	<b>GenBank Accession Number:</b> NM_015180	<b>Purification Method:</b> Antigen affinity purification
<b>Size:</b> 150ul , Concentration: 650 µg/ml by Nanodrop and 340 µg/ml by Bradford method using BSA as the standard;	<b>GeneID (NCBI):</b> 23224	<b>Recommended Dilutions:</b> WB 1:500-1:1000
<b>Source:</b> Rabbit	<b>Full Name:</b> spectrin repeat containing, nuclear envelope 2	
<b>Isotype:</b> IgG	<b>Calculated MW:</b> 799 kDa	
	<b>Observed MW:</b> 50-60 kDa	

## Applications

<b>Tested Applications:</b> IF, WB, ELISA	<b>Positive Controls:</b> WB : HEK-293 cells,
<b>Species Specificity:</b> human, mouse, rat	

## Background Information

Nesprin-2 is a member of actin-binding proteins that localize to the outer nuclear membrane. As a nuclear envelope component it provides a link between cytoskeletal components of the cytoplasm and the nucleoplasm. Nesprin genes generate, through alternative splicing and alternative promoter and/or terminator usage, a multitude of differentially expressed isoforms, differing in domain architecture and length. The largest protein isoform, known as NUANCE or GIANT, has a predicted MW around 796 kDa. Other isoforms range from 30 kDa to 119 kDa.

## Storage

**Storage:**  
Store at -20°C. Stable for one year after shipment.  
**Storage Buffer:**  
PBS with 0.02% sodium azide and 50% glycerol pH 7.3.  
Aliquoting is unnecessary for -20°C storage

\*\*\* 20ul sizes contain 0.1% BSA

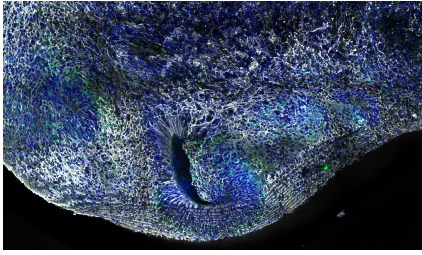
For technical support and original validation data for this product please contact:

T: 1 (888) 4PTGLAB (1-888-478-4522) (toll free in USA), or 1(312) 455-8498 (outside USA)

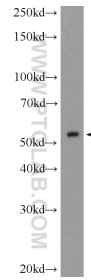
E: [proteintech@ptglab.com](mailto:proteintech@ptglab.com)  
W: [ptglab.com](http://ptglab.com)

This product is exclusively available under Proteintech Group brand and is not available to purchase from any other manufacturer.

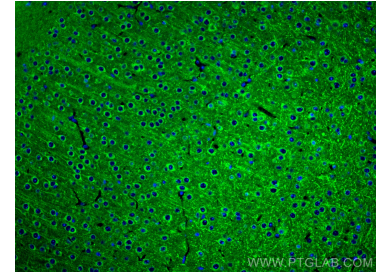
## Selected Validation Data



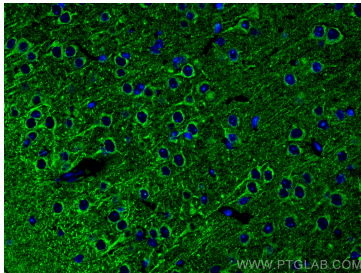
Human dorsal cerebral organoid at 12 weeks. 4% PFA fixed. Antibody dilution was 1:500 for Syne-2 (25265-1-AP; white), DAPI 1:1000. Image created by Wimmer Ryszard from the Institut Curie in Paris, France



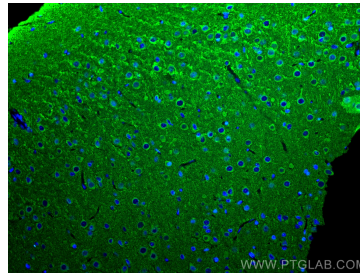
HEK-293 cells were subjected to SDS PAGE followed by western blot with 25265-1-AP (SYNE2 Antibody) at dilution of 1:600 incubated at room temperature for 1.5 hours.



Immunofluorescent analysis of (4% PFA) fixed mouse brain tissue using Nesprin 2 antibody (25265-1-AP) at dilution of 1:200 and CoraLite®488-Conjugated AffiniPure Goat Anti-Rabbit IgG(H+L).



Immunofluorescent analysis of (4% PFA) fixed mouse brain tissue using Nesprin 2 antibody (25265-1-AP) at dilution of 1:200 and CoraLite®488-Conjugated AffiniPure Goat Anti-Rabbit IgG(H+L).



Immunofluorescent analysis of (4% PFA) fixed rat brain tissue using Nesprin 2 antibody (25265-1-AP) at dilution of 1:200 and CoraLite®488-Conjugated AffiniPure Goat Anti-Rabbit IgG(H+L).