

For Research Use Only

CRHR2 Polyclonal antibody

Catalog Number: 25267-1-AP

5 Publications



Basic Information

Catalog Number:

25267-1-AP

Size:

150ul, Concentration: 350 ug/ml by Nanodrop and 200 ug/ml by Bradford method using BSA as the standard;

Source:

Rabbit

Isotype:

IgG

GenBank Accession Number:

NM_001883

GeneID (NCBI):

1395

UNIPROT ID:

Q13324

Full Name:

corticotropin releasing hormone receptor 2

Calculated MW:

48 kDa

Observed MW:

48 kDa

Purification Method:

Antigen affinity purification

Recommended Dilutions:

WB 1:500-1:1000

IHC 1:50-1:500

Applications

Tested Applications:

WB, IHC, ELISA

Cited Applications:

WB, IHC, IF

Species Specificity:

human, mouse, rat

Cited Species:

human, mouse, rat

Positive Controls:

WB: rat skeletal muscle tissue, mouse heart tissue

IHC: mouse brain tissue,

Note-IHC: suggested antigen retrieval with TE buffer pH 9.0; (*) Alternatively, antigen retrieval may be performed with citrate buffer pH 6.0

Background Information

CRHR2 is a receptor for corticotropin-releasing factor (CRF) and belongs to the G-protein coupled receptor family. It shows high affinity for CRF and also binds to related peptides such as urocortin I, II, and III. This receptor is involved in mediating the endocrine, autonomic, and behavioral responses to stress and immune challenges.

Notable Publications

Author	Pubmed ID	Journal	Application
Changchun Cao	31715260	Cell Signal	WB
Yueshan Sun	36678544	Pharmaceuticals (Basel)	WB,IF
Xinyuan Wang	39593298	Food Res Int	WB

Storage

Storage:

Store at -20°C. Stable for one year after shipment.

Storage Buffer:

PBS with 0.02% sodium azide and 50% glycerol, pH7.3

Aliquoting is unnecessary for -20°C storage

*** 20ul sizes contain 0.1% BSA

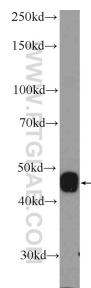
For technical support and original validation data for this product please contact:

T: 1 (888) 4PTGLAB (1-888-478-4522) (toll free in USA), or 1(312) 455-8498 (outside USA)

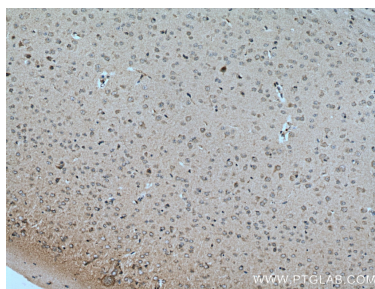
E: proteintech@ptglab.com
W: ptglab.com

This product is exclusively available under Proteintech Group brand and is not available to purchase from any other manufacturer.

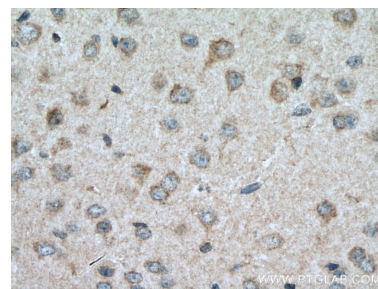
Selected Validation Data



rat skeletal muscle tissue were subjected to SDS PAGE followed by western blot with 25267-1-AP (CRHR2 Antibody) at dilution of 1:600 incubated at room temperature for 1.5 hours.



Immunohistochemical analysis of paraffin-embedded mouse brain tissue slide using 25267-1-AP (CRHR2 antibody) at dilution of 1:200 (under 10x lens). Heat mediated antigen retrieval with Tris-EDTA buffer (pH 9.0).



Immunohistochemical analysis of paraffin-embedded mouse brain tissue slide using 25267-1-AP (CRHR2 antibody) at dilution of 1:200 (under 40x lens). Heat mediated antigen retrieval with Tris-EDTA buffer (pH 9.0).