

For Research Use Only

RBM25 Polyclonal antibody

Catalog Number: 25297-1-AP **2 Publications**



Basic Information

Catalog Number: 25297-1-AP	GenBank Accession Number: BC113389	Purification Method: Antigen affinity purification
Size: 150ul, Concentration: 400 µg/ml by Nanodrop and 247 µg/ml by Bradford method using BSA as the standard;	GeneID (NCBI): 58517	Recommended Dilutions: WB 1:1000-1:4000 IP 0.5-4.0 ug for IP and 1:500-1:2000 for WB
Source: Rabbit	Full Name: RNA binding motif protein 25	IHC 1:20-1:200
Isotype: IgG	Calculated MW: 843 aa, 100 kDa	IF 1:200-1:800
Immunogen Catalog Number: AG18244	Observed MW: 110-120 kDa	

Applications

Tested Applications: IF, IHC, IP, WB, ELISA	Positive Controls:
Cited Applications: IP, RIP	WB: HEK-293 cells, HeLa cells, Jurkat cells, mouse brain tissue
Species Specificity: human, mouse	IP: HEK-293 cells,
Cited Species: rat, mouse	IHC: human breast cancer tissue, human cervical cancer tissue
Note-IHC: <i>suggested antigen retrieval with TE buffer pH 9.0; (*) Alternatively, antigen retrieval may be performed with citrate buffer pH 6.0</i>	IF: HeLa cells,

Background Information

RNA-binding protein 25 (RBM25), also named as Protein S164 or RNPC7, is a 843 amino acid protein, which contains one RRM domain and one PWI domain. RBM25 localizes in the nucleus and cytoplasm. RBM25 acts as a regulator of alternative pre-mRNA splicing and is involved in apoptotic cell death through the regulation of the apoptotic factor BCL2L1 isoform expression.

Notable Publications

Author	Pubmed ID	Journal	Application
Xin Tian	37953772	PeerJ	IP
Cui Ma	37139839	Arterioscler Thromb Vasc Biol	RIP

Storage

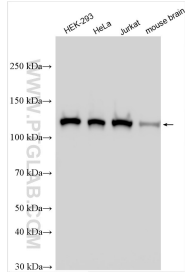
Storage:
Store at -20°C. Stable for one year after shipment.
Storage Buffer:
PBS with 0.02% sodium azide and 50% glycerol pH 7.3.
Aliquoting is unnecessary for -20°C storage

*** 20ul sizes contain 0.1% BSA

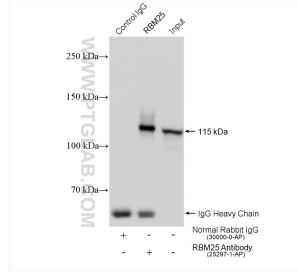
For technical support and original validation data for this product please contact:
T: 1 (888) 4PTGLAB (1-888-478-4522) (toll free in USA), or 1(312) 455-8498 (outside USA)
E: proteintech@ptglab.com
W: ptglab.com

This product is exclusively available under Proteintech Group brand and is not available to purchase from any other manufacturer.

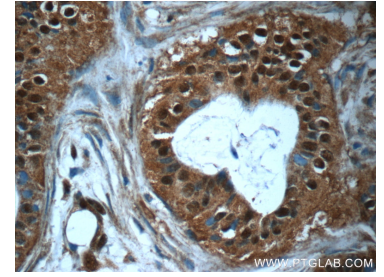
Selected Validation Data



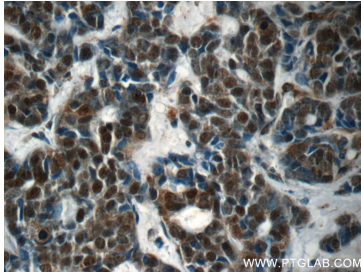
Various lysates were subjected to SDS PAGE followed by western blot with 25297-1-AP (RBM25 antibody) at dilution of 1:2000 incubated at room temperature for 1.5 hours.



IP result of anti-RBM25(IP:25297-1-AP, 4ug; Detection:25297-1-AP 1:1000) with HEK-293 cells lysate 1400 ug.



Immunohistochemical analysis of paraffin-embedded human breast cancer tissue slide using 25297-1-AP (RBM25 Antibody) at dilution of 1:50 (under 40x lens).



Immunohistochemical analysis of paraffin-embedded human cervical cancer tissue slide using 25297-1-AP (RBM25 Antibody) at dilution of 1:50 (under 40x lens).