

For Research Use Only

C3orf43 Polyclonal antibody

Catalog Number: 25362-1-AP



Basic Information

Catalog Number:

25362-1-AP

Size:

150ul , Concentration: 750 ug/ml by Nanodrop and 367 ug/ml by Bradford method using BSA as the standard;

Source:

Rabbit

Isotype:

IgG

Immunogen Catalog Number:

AG21670

GenBank Accession Number:

BC118636

GeneID (NCBI):

255798

UNIPROT ID:

Q147U7

Full Name:

chromosome 3 open reading frame 43

Calculated MW:

214 aa, 25 kDa

Observed MW:

25-30 kDa

Purification Method:

Antigen affinity purification

Recommended Dilutions:

WB 1:500-1:1000

IF/ICC 1:10-1:100

Applications

Tested Applications:

WB, IF/ICC, ELISA

Species Specificity:

human, mouse

Positive Controls:

WB : mouse heart tissue, human plasma tissue

IF/ICC : HepG2 cells, HeLa cells

Storage

Storage:

Store at -20°C. Stable for one year after shipment.

Storage Buffer:

PBS with 0.02% sodium azide and 50% glycerol pH 7.3.

Aliquoting is unnecessary for -20°C storage

*** 20ul sizes contain 0.1% BSA

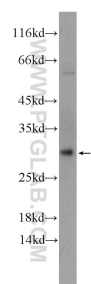
For technical support and original validation data for this product please contact:

T: 1 (888) 4PTGLAB (1-888-478-4522) (toll free in USA), or 1(312) 455-8498 (outside USA)

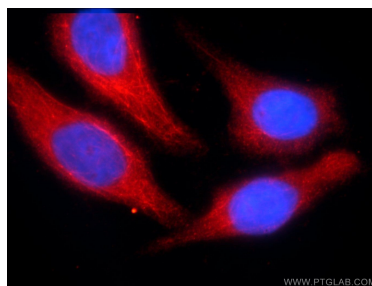
E: proteintech@ptglab.com
W: ptglab.com

This product is exclusively available under Proteintech Group brand and is not available to purchase from any other manufacturer.

Selected Validation Data



mouse heart tissue were subjected to SDS PAGE followed by western blot with 25362-1-AP (C3orf43 Antibody) at dilution of 1:600 incubated at room temperature for 1.5 hours.



Immunofluorescent analysis of HepG2 cells using 25362-1-AP (C3orf43 antibody) at dilution of 1:25 and Rhodamine-Goat anti-Rabbit IgG.