

For Research Use Only

REM2 Polyclonal antibody

Catalog Number: 25371-1-AP



Basic Information

Catalog Number:

25371-1-AP

Size:

150ul , Concentration: 900 ug/ml by Nanodrop and 440 ug/ml by Bradford method using BSA as the standard;

Source:

Rabbit

Isotype:

IgG

Immunogen Catalog Number:

AG21991

GenBank Accession Number:

BC035663

GeneID (NCBI):

161253

UNIPROT ID:

Q8IYK8

Full Name:

RAS (RAD and GEM)-like GTP binding

2

Calculated MW:

340 aa, 37 kDa

Observed MW:

37 kDa

Purification Method:

Antigen affinity purification

Recommended Dilutions:

WB 1:500-1:2000

Applications

Tested Applications:

WB, ELISA

Species Specificity:

human, mouse

Positive Controls:

WB : fetal human brain tissue, mouse brain tissue

Background Information

Rem2 is a member of the RGK subfamily of RAS small GTPases. Rem2 inhibits high voltage activated calcium channels, is involved in synaptogenesis, and regulates dendritic morphology. Rem2 is the primary RGK protein expressed in the nervous system, but to date, the precise expression patterns of this protein are unknown.

Storage

Storage:

Store at -20°C. Stable for one year after shipment.

Storage Buffer:

PBS with 0.02% sodium azide and 50% glycerol pH 7.3.

Aliquoting is unnecessary for -20°C storage

*** 20ul sizes contain 0.1% BSA

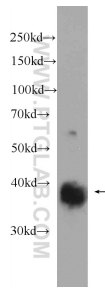
For technical support and original validation data for this product please contact:

T: 1 (888) 4PTGLAB (1-888-478-4522) (toll free in USA), or 1(312) 455-8498 (outside USA)

E: proteintech@ptglab.com
W: ptglab.com

This product is exclusively available under Proteintech Group brand and is not available to purchase from any other manufacturer.

Selected Validation Data



fetal human brain tissue were subjected to SDS PAGE followed by western blot with 25371-1-AP (REM2 Antibody) at dilution of 1:1000 incubated at room temperature for 1.5 hours.