

For Research Use Only

MTF1 Polyclonal antibody

Catalog Number: 25383-1-AP

Featured Product

34 Publications



Basic Information

Catalog Number:

25383-1-AP

Size:

150ul, Concentration: 450 ug/ml by Nanodrop and 240 ug/ml by Bradford method using BSA as the standard;

Source:

Rabbit

Isotype:

IgG

Immunogen Catalog Number:

AG21848

GenBank Accession Number:

BC014454

GeneID (NCBI):

4520

UNIPROT ID:

Q14872

Full Name:

metal-regulatory transcription factor 1

Calculated MW:

753 aa, 81 kDa

Observed MW:

65-70 kDa

Purification Method:

Antigen affinity purification

Recommended Dilutions:

WB 1:500-1:2000

IHC 1:50-1:500

Applications

Tested Applications:

WB, IHC, ELISA

Cited Applications:

WB, IHC, IF, IP, ChIP

Species Specificity:

human, mouse

Cited Species:

human, mouse, rat, fish

Note-IHC: suggested antigen retrieval with TE buffer pH 9.0; (*) Alternatively, antigen retrieval may be performed with citrate buffer pH 6.0

Positive Controls:

WB: mouse liver tissue, Jurkat cells, mouse brain tissue, mouse heart tissue, mouse skeletal muscle tissue

IHC: human liver tissue,

Background Information

Metal regulatory transcription factor 1 (MTF1), contains six C2H2-type zinc finger and localizes in the nucleus. MTF1 is a 753 amino acid protein and calculated molecular weight is 81 kDa. We always detected a 65-70 protein by western blot. MTF1 binds to the metal responsive element and activates the metallothionein I promoter.

Notable Publications

Author	Pubmed ID	Journal	Application
Sidi Yang	31569998	FASEB J	
Shu-Wei Chen	34769475	Int J Mol Sci	WB
Xuelei Ruan	32464546	Mol Ther Nucleic Acids	WB

Storage

Storage:

Store at -20°C. Stable for one year after shipment.

Storage Buffer:

PBS with 0.02% sodium azide and 50% glycerol pH 7.3.

Aliquoting is unnecessary for -20°C storage

*** 20ul sizes contain 0.1% BSA

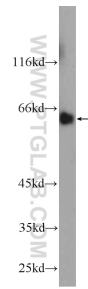
For technical support and original validation data for this product please contact:

T: 1 (888) 4PTGLAB (1-888-478-4522) (toll free in USA), or 1(312) 455-8498 (outside USA)

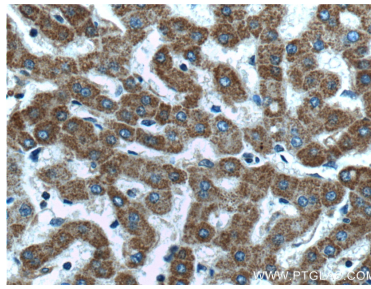
E: proteintech@ptglab.com
W: ptglab.com

This product is exclusively available under Proteintech Group brand and is not available to purchase from any other manufacturer.

Selected Validation Data



mouse liver tissue were subjected to SDS PAGE followed by western blot with 25383-1-AP (MTF1 Antibody) at dilution of 1:1000 incubated at room temperature for 1.5 hours.



Immunohistochemical analysis of paraffin-embedded human liver tissue slide using 25383-1-AP (MTF1 Antibody) at dilution of 1:200 (under 40x lens).