

For Research Use Only

G6PD Polyclonal antibody

Catalog Number: 25413-1-AP

Featured Product

37 Publications



Basic Information

Catalog Number: 25413-1-AP	GenBank Accession Number: BC000337	Purification Method: Antigen affinity purification
Size: 150ul , Concentration: 800 µg/ml by Nanodrop and 427 µg/ml by Bradford method using BSA as the standard;	GeneID (NCBI): 2539	Recommended Dilutions: WB 1:1000-1:5000 IHC 1:250-1:1000 IF 1:50-1:500
Source: Rabbit	Full Name: glucose-6-phosphate dehydrogenase	
Isotype: IgG	Calculated MW: 59 kDa	
Immunogen Catalog Number: AG21862	Observed MW: 59 kDa	

Applications

Tested Applications: IF, IHC, WB, ELISA	Positive Controls: WB : MCF-7 cells, HeLa cells, HEK-293 cells IHC : human liver cancer tissue, human ovary tumor tissue IF : HeLa cells,
Cited Applications: CoIP, IF, IHC, IP, WB	
Species Specificity: human	
Cited Species: human, rat, sheep, mouse	
Note-IHC: suggested antigen retrieval with TE buffer pH 9.0; (*) Alternatively, antigen retrieval may be performed with citrate buffer pH 6.0	

Background Information

G6PD (Glucose-6-phosphate 1-dehydrogenase) belongs to the glucose-6-phosphate dehydrogenase family. It is a housekeeping enzyme encoded in mammals by an X-linked gene. G6PD has important functions in intermediary metabolism because it catalyzes the first step in the pentose phosphate pathway and provides reductive potential in the form of NADPH. (PMID:7489710). This protein has 3 isoforms produced by alternative splicing.

Notable Publications

Author	Pubmed ID	Journal	Application
Gongjun Wang	36248857	Front Immunol	IHC
Teresa W-M Fan	36150727	J Immunol	
Xiaohan Jin	36243112	J Biol Chem	WB

Storage

Storage:
Store at -20°C. Stable for one year after shipment.
Storage Buffer:
PBS with 0.02% sodium azide and 50% glycerol pH 7.3.
Aliquoting is unnecessary for -20°C storage

*** 20ul sizes contain 0.1% BSA

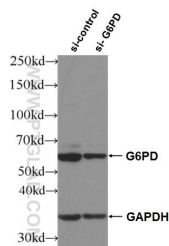
For technical support and original validation data for this product please contact:
T: 1 (888) 4PTGLAB (1-888-478-4522) (toll free in USA), or 1(312) 455-8498 (outside USA)
E: proteintech@ptglab.com
W: ptglab.com

This product is exclusively available under Proteintech Group brand and is not available to purchase from any other manufacturer.

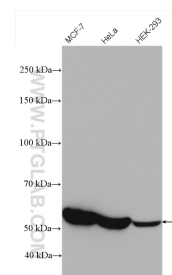
Selected Validation Data



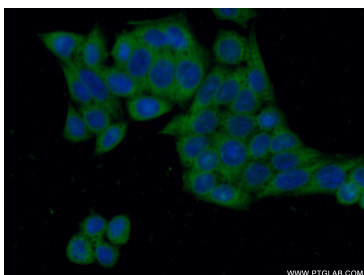
Immunohistochemical analysis of paraffin-embedded human liver cancer tissue slide using 25413-1-AP (G6PD antibody) at dilution of 1:500 (under 10x lens). Heat mediated antigen retrieval with Tris-EDTA buffer (pH 9.0).



WB result of G6PD antibody (25413-1-AP; 1:3000; incubated at room temperature for 1.5 hours) with sh-Control and sh-G6PD transfected HeLa cells.



MCF-7 cells were subjected to SDS PAGE followed by western blot with 25413-1-AP (G6PD antibody) at dilution of 1:3000 incubated at room temperature for 1.5 hours.



Immunofluorescent analysis of (-20°C Ethanol) fixed HeLa cells using 25413-1-AP (G6PD antibody) at dilution of 1:50 and Alexa Fluor 488-conjugated AffiniPure Goat Anti-Rabbit IgG(H+L).