

For Research Use Only

TSC22D2 Polyclonal antibody

Catalog Number: 25418-1-AP **1 Publications**



Basic Information

Catalog Number: 25418-1-AP	GenBank Accession Number: BC044643	Purification Method: Antigen affinity purification
Size: 150ul, Concentration: 750 µg/ml by Nanodrop and 387 µg/ml by Bradford method using BSA as the standard;	GeneID (NCBI): 9819	Recommended Dilutions: WB 1:2000-1:16000
Source: Rabbit	UNIPROT ID: O75157	IP 0.5-4.0 ug for 1.0-3.0 mg of total protein lysate
Isotype: IgG	Full Name: TSC22 domain family, member 2	IHC 1:20-1:200
Immunogen Catalog Number: AG22294	Calculated MW: 780 aa, 79 kDa	IF 1:20-1:200
	Observed MW: 100-110 kDa	

Applications

Tested Applications: IF, IHC, IP, WB, ELISA	Positive Controls:
Cited Applications: IHC, WB	WB : HEK-293 cells, MDA-MB-453s cells, HepG2 cells, SH-SY5Y cells
Species Specificity: human	IP : HepG2 cells,
Cited Species: human	IHC : human kidney tissue, human colon tissue
	IF : HepG2 cells,
Note-IHC: suggested antigen retrieval with TE buffer pH 9.0; (*) Alternatively, antigen retrieval may be performed with citrate buffer pH 6.0	

Background Information

TSC22D2 (transforming growth factor β -stimulated clone 22 domain family, member 2) is a member of the TSC-22 domain family comprising putative transcription factors that are characterized by a carboxy-terminal leucine zipper and an adjacent TSC-box. TSC22D2 is expressed at low levels in CRC and that TSC22D2 overexpression significantly inhibited the growth rate of cancer cells (PMID: 27573352).

Notable Publications

Author	Pubmed ID	Journal	Application
Qixian Liu	36894917	BMC Cancer	WB,IHC

Storage

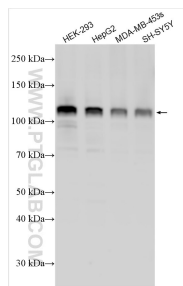
Storage:
Store at -20°C. Stable for one year after shipment.
Storage Buffer:
PBS with 0.02% sodium azide and 50% glycerol pH 7.3.
Aliquoting is unnecessary for -20°C storage

*** 20ul sizes contain 0.1% BSA

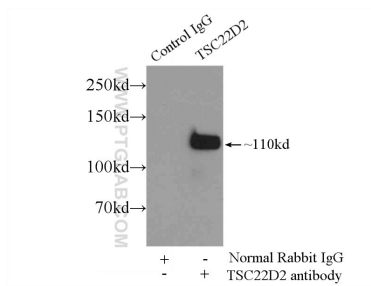
For technical support and original validation data for this product please contact:
T: 1 (888) 4PTGLAB (1-888-478-4522) (toll free in USA), or 1(312) 455-8498 (outside USA)
E: proteintech@ptglab.com
W: ptglab.com

This product is exclusively available under Proteintech Group brand and is not available to purchase from any other manufacturer.

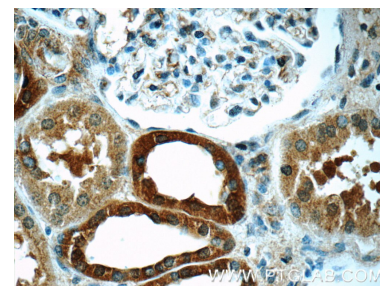
Selected Validation Data



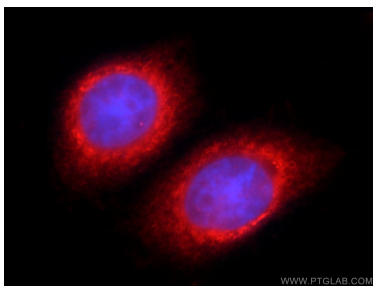
Various lysates were subjected to SDS PAGE followed by western blot with 25418-1-AP (TSC22D2 antibody) at dilution of 1:8000 incubated at room temperature for 1.5 hours.



IP result of anti-TSC22D2 (IP:25418-1-AP, 5 μ g; Detection:25418-1-AP 1:300) with HepG2 cells lysate 2500 μ g.



Immunohistochemical analysis of paraffin-embedded human kidney tissue slide using 25418-1-AP (TSC22D2 Antibody) at dilution of 1:50 (under 40 \times lens).



Immunofluorescent analysis of HepG2 cells using 25418-1-AP (TSC22D2 antibody) at dilution of 1:50 and Rhodamine-Goat anti-Rabbit IgG.