

For Research Use Only

DKC1 Polyclonal antibody

Catalog Number: 25420-1-AP

Featured Product

3 Publications



Basic Information

Catalog Number:

25420-1-AP

Size:

150ul, Concentration: 700 ug/ml by Nanodrop and 393 ug/ml by Bradford method using BSA as the standard;

Source:

Rabbit

Isotype:

IgG

Immunogen Catalog Number:

AG7992

GenBank Accession Number:

BC009928

GeneID (NCBI):

1736

UNIPROT ID:

O60832

Full Name:

dyskeratosis congenita 1, dyskerin

Calculated MW:

58 kDa

Observed MW:

58 kDa

Purification Method:

Antigen affinity purification

Recommended Dilutions:

WB 1:500-1:2400

IHC 1:250-1:1000

IF/ICC 1:50-1:500

Applications

Tested Applications:

WB, IHC, IF/ICC, ELISA

Cited Applications:

WB, IHC, IF

Species Specificity:

human

Cited Species:

human

Note-IHC: suggested antigen retrieval with TE buffer pH 9.0; (*) Alternatively, antigen retrieval may be performed with citrate buffer pH 6.0

Positive Controls:

WB : HepG2 cells, HeLa cells, COLO 320 cells, Jurkat cells, MCF-7 cells

IHC : human colon cancer tissue,

IF/ICC : HepG2 cells,

Notable Publications

Author	Pubmed ID	Journal	Application
Cai Han	35354054	Cell Rep	WB
Yan Zhang	27573912	Stem Cells	WB
Daidi Zhang	39103487	J Cancer Res Clin Oncol	WB,IHC,IF

Storage

Storage:

Store at -20°C. Stable for one year after shipment.

Storage Buffer:

PBS with 0.02% sodium azide and 50% glycerol pH 7.3.

Aliquoting is unnecessary for -20°C storage

*** 20ul sizes contain 0.1% BSA

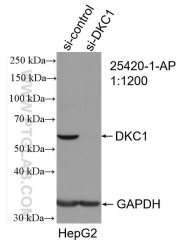
For technical support and original validation data for this product please contact:

T: 1 (888) 4PTGLAB (1-888-478-4522) (toll free in USA), or 1(312) 455-8498 (outside USA)

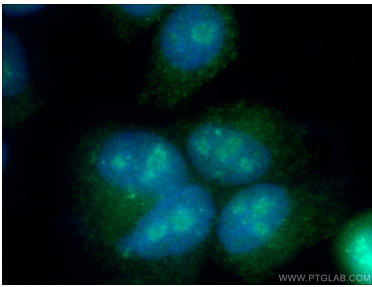
E: proteintech@ptglab.com
W: ptglab.com

This product is exclusively available under Proteintech Group brand and is not available to purchase from any other manufacturer.

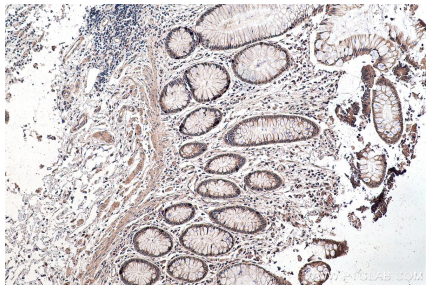
Selected Validation Data



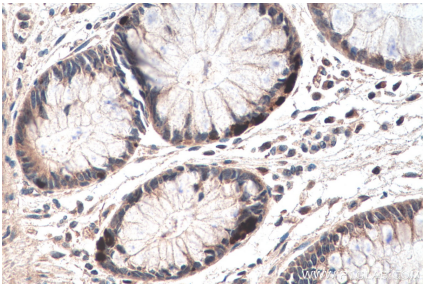
WB result of DKC1 antibody (25420-1-AP; 1:1200; incubated at room temperature for 1.5 hours) with sh-Control and sh-DKC1 transfected HepG2 cells.



Immunofluorescent analysis of (4% PFA) fixed HepG2 cells using 25420-1-AP (DKC1 antibody) at dilution of 1:50 and Alexa Fluor 488-Conjugated Goat Anti-Rabbit IgG(H+L).



Immunohistochemical analysis of paraffin-embedded human colon cancer tissue slide using 25420-1-AP (DKC1 antibody) at dilution of 1:500 (under 10x lens). Heat mediated antigen retrieval with Tris-EDTA buffer (pH 9.0).



Immunohistochemical analysis of paraffin-embedded human colon cancer tissue slide using 25420-1-AP (DKC1 antibody) at dilution of 1:500 (under 40x lens). Heat mediated antigen retrieval with Tris-EDTA buffer (pH 9.0).